

COVID-19 RESPONSE

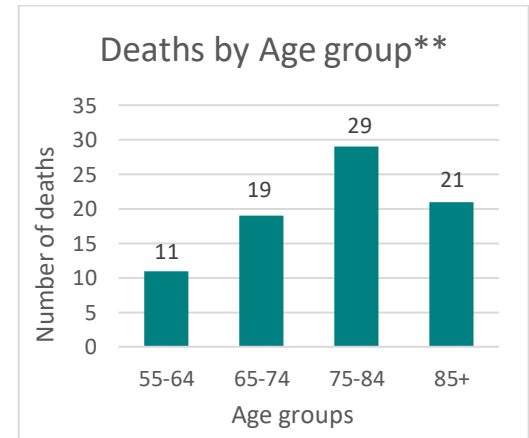
SURVEILLANCE REPORT: August 28 – September 10, 2022

Overview

- Cases and Percentage of positive tests have decreased.
- COVID- 19 related outbreaks and Emergency Department visits have decreased.
- Wastewater data shows Modesto's and Turlock's average viral load have decreased from last week.

COVID-19 MONITORING

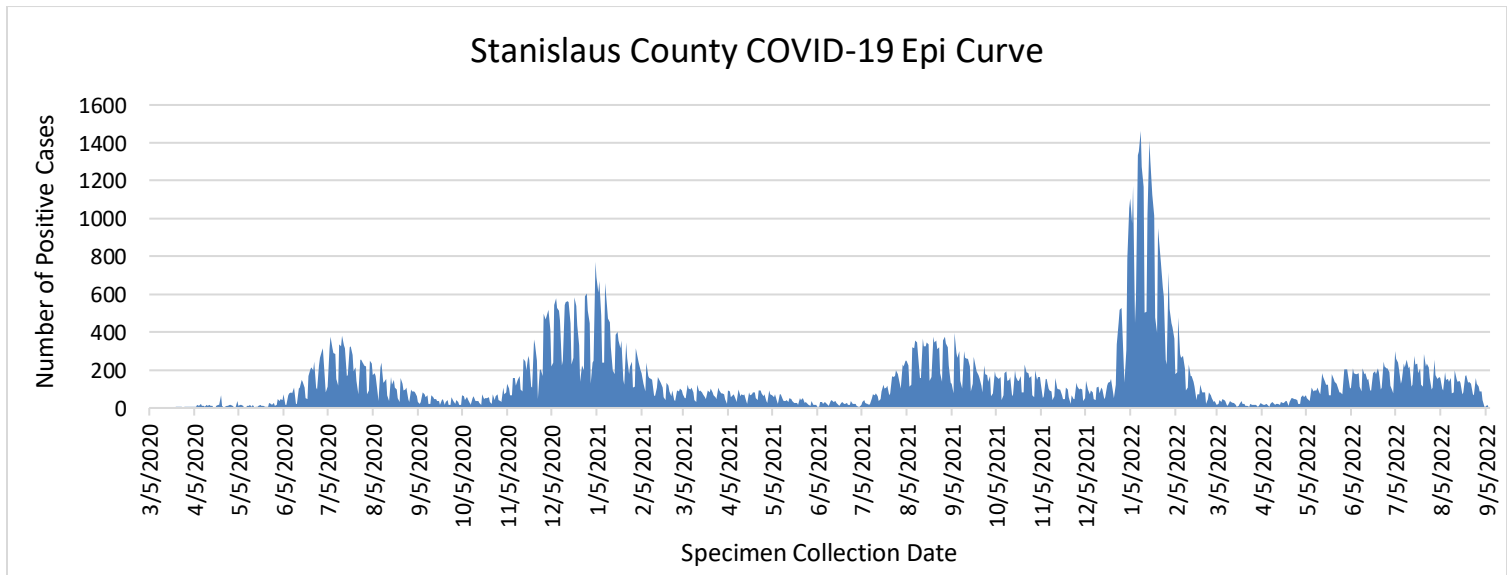
Age	Report Weeks			Total		
	Count	%	Rate	Count	%	Rate*
0-17	222	18.5%	1.49	23,524	17.1%	157.52
18-44	456	38.0%	2.18	65,123	47.4%	310.91
45-64	331	27.6%	2.56	33,775	24.6%	265.55
65+	192	16.0%	2.58	14,932	10.9%	200.78
Total	1,201	-	-	137,392	-	-
Deaths	15	-	-	1,871	-	-



*Rate per 1,000 population; Data Source: California Department of Finance

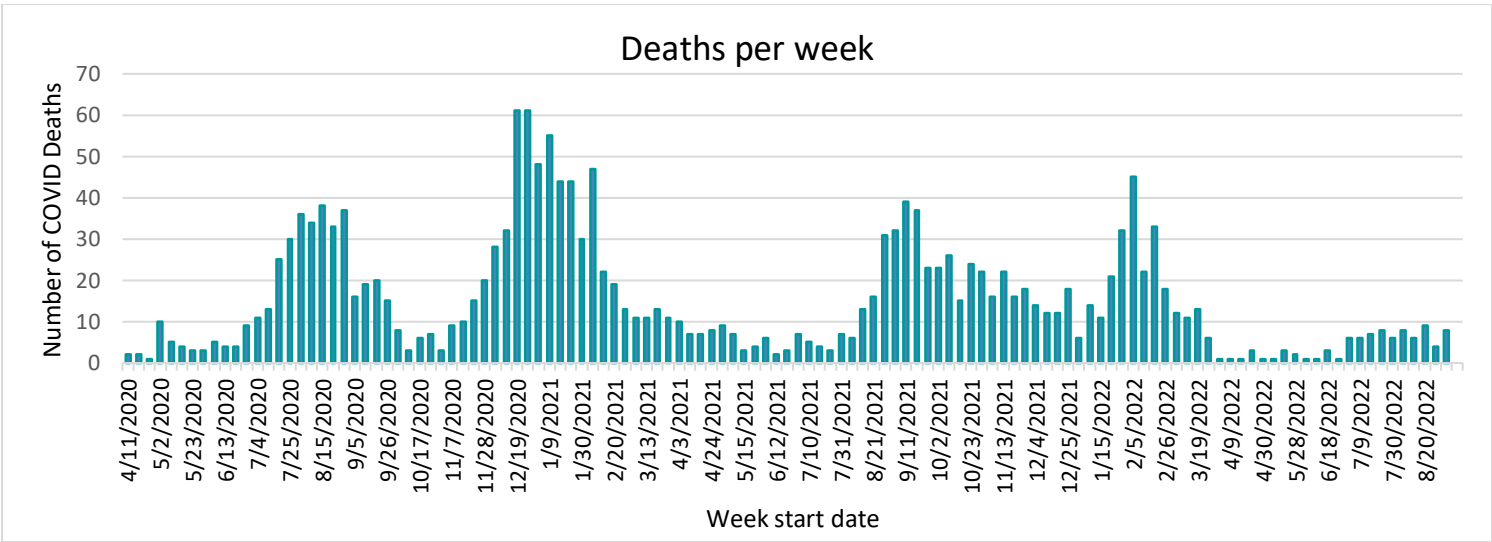
** Total Deaths from April 1, 2022, through September 16, 2022, Age groups with less than 10 deaths are not displayed.

This graph shows the daily number of COVID-19 confirmed cases reported among Stanislaus County residents by episode date.



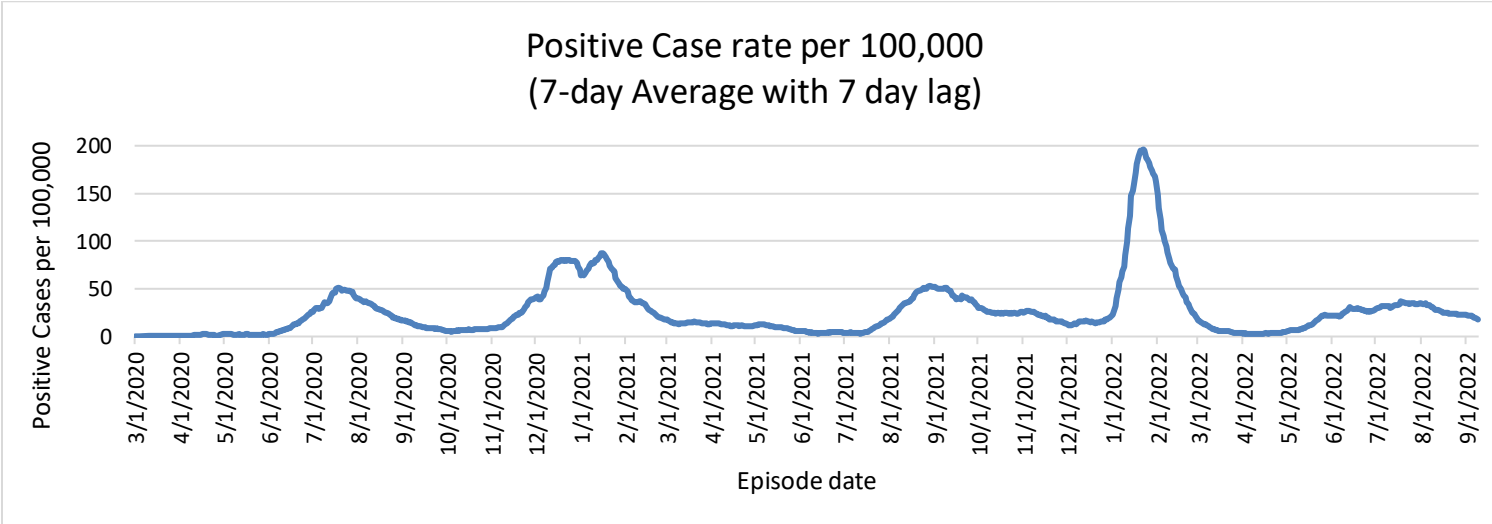
Note: Due to delays in specimen processing, totals for the past two weeks may be incomplete.

Reported COVID-19 cases and deaths on this page are those that have been confirmed by Stanislaus County Public Health.

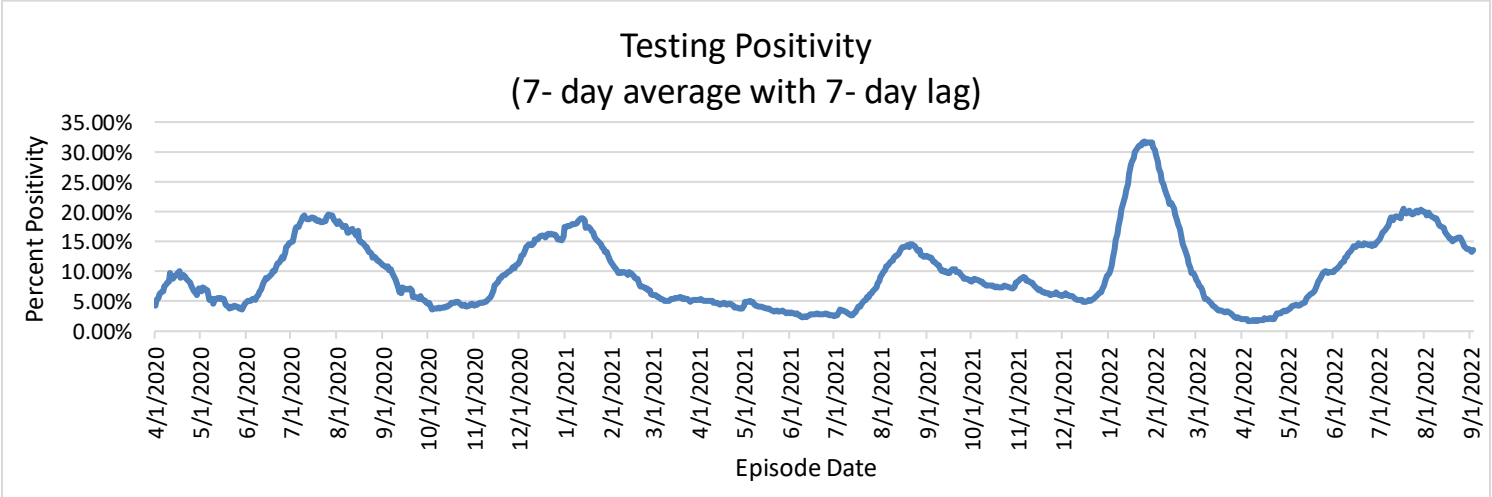


Note: Due to delays in death reporting and assessment, totals for the past two weeks may be incomplete. Reported COVID-19 cases and deaths on this page are those that have been confirmed by Stanislaus County Public Health.

The graph below shows positive case rate (number of positive cases per 100,000 county population), 7-day average with 7-day lag, through the report week. This does not include the state adjustments and may vary from state measures.



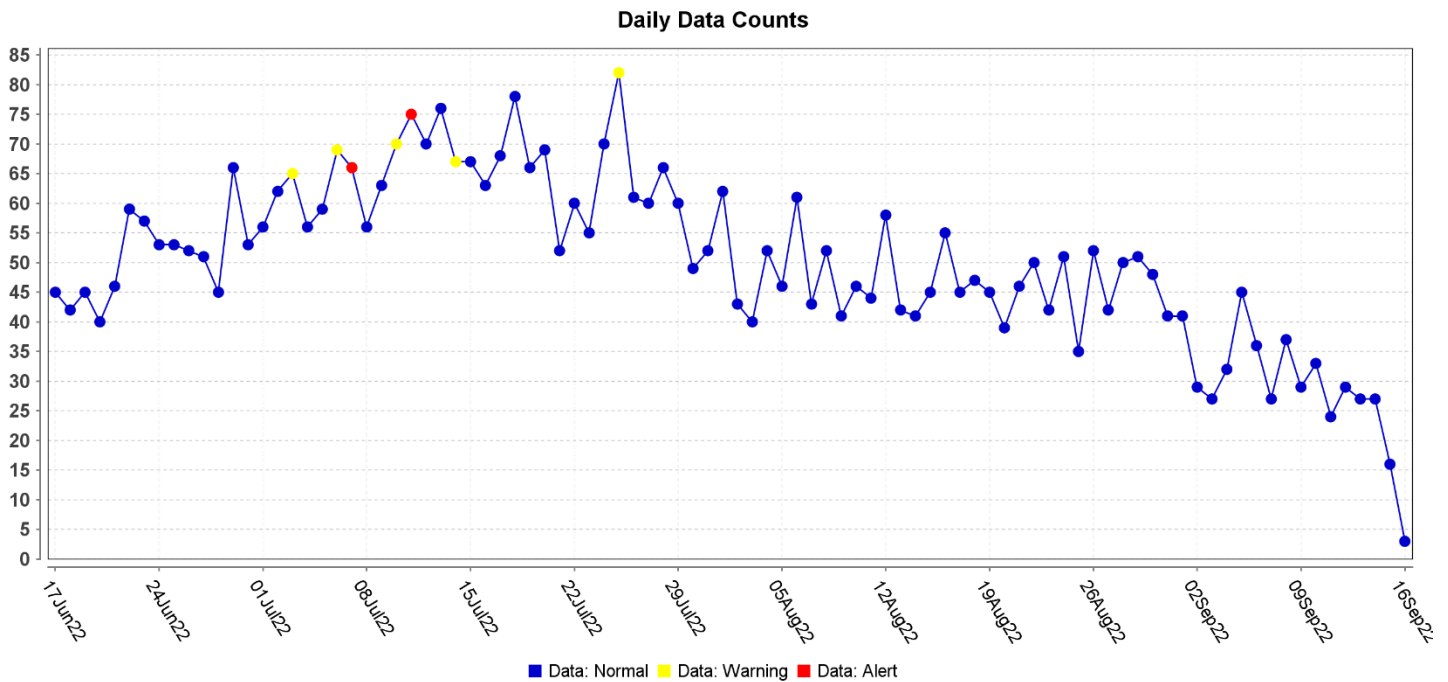
The graph below shows testing positivity (percent of tests that are positive), 7-day average with 7-day lag, through the report week. This may vary from state measures.



COMMUNITY MONITORING – EMERGENCY CASES

COVID-19 LIKE ILLNESS

This graph shows the number of emergency room visits for COVID-19-like illness for all Stanislaus County Hospitals.



COVID-19 OUTBREAKS BY INDUSTRY

Current Outbreaks as of September 16, 2022:

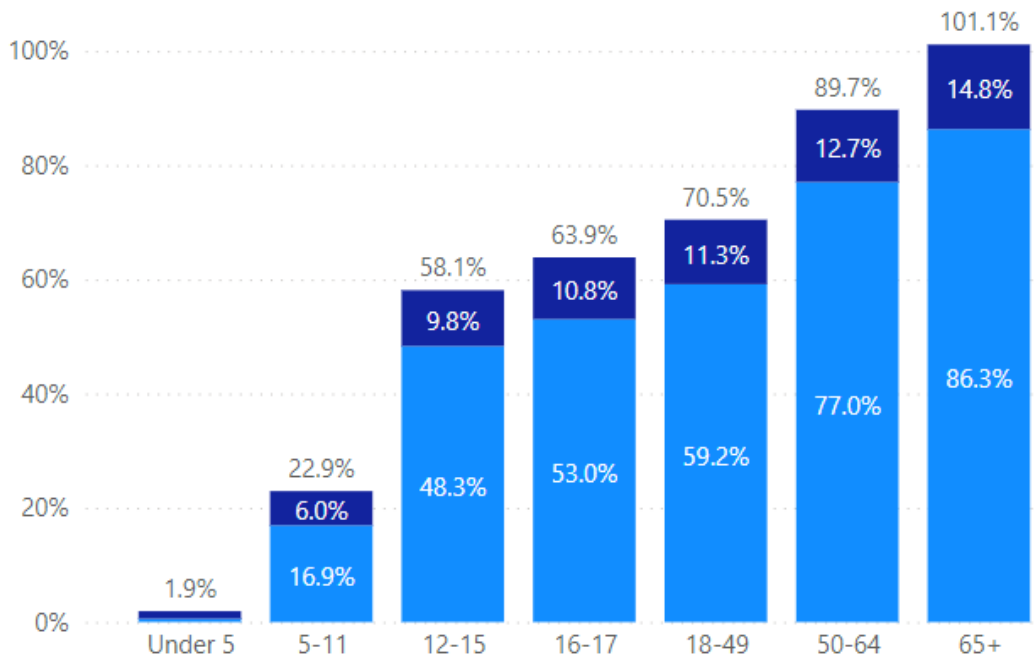
Industry	Number of Open Outbreaks	Open Outbreaks Newly Reported in last 2 weeks
Agricultural operations	1	0
Auto Services	1	1
Distribution Warehouse	1	0
Food processing/manufacturing	3	0
Health Care and Social Assistance	1	0
Office space	5	0
Retail Space	8	1
School	6	2
SNF/Residential Care Facility **	8	0
Total	34	4

Note: Stanislaus County defines an outbreak as ≥ 3 cases of confirmed COVID-19 with epi-linkage

** Reported weekly

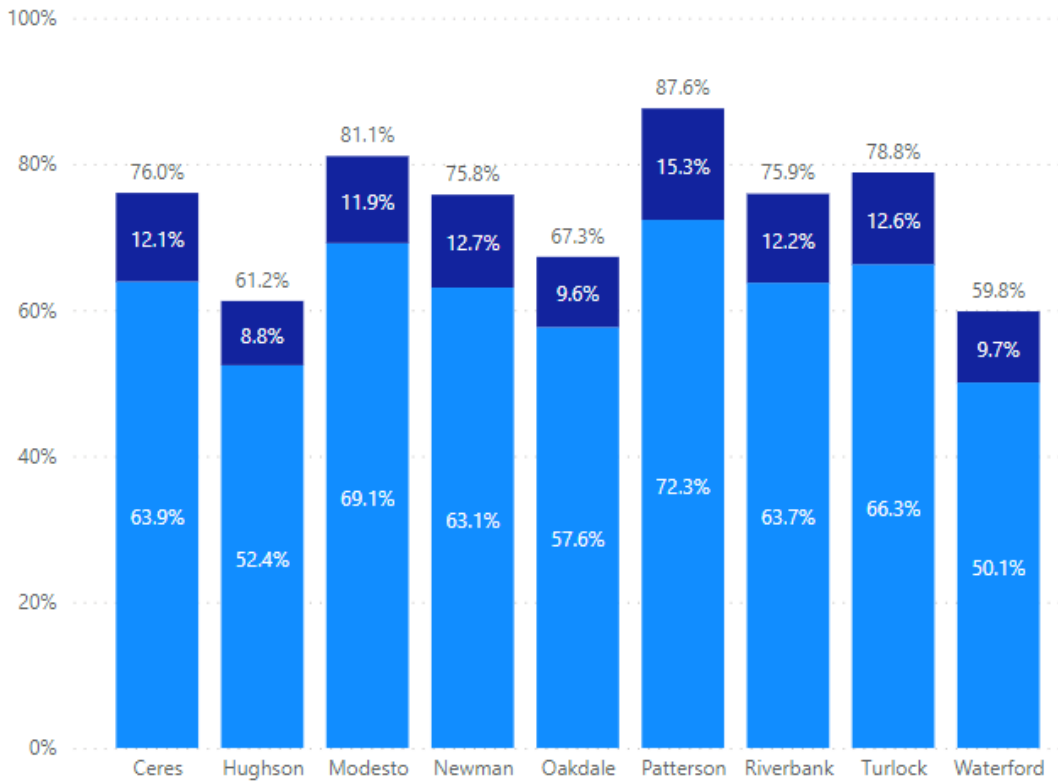
Vaccine Coverage Vaccination Coverage by Age

● % Fully Vaccinated ● % Partially Vaccinated



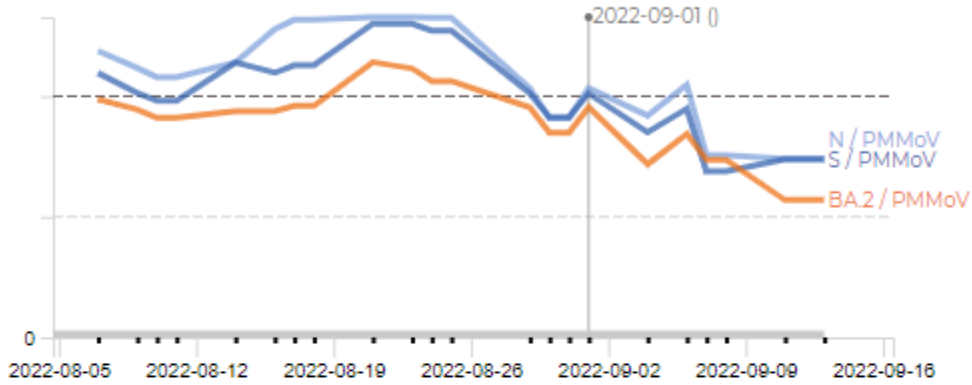
Vaccination Coverage by City

● % Fully Vaccinated ● % Partially Vaccinated

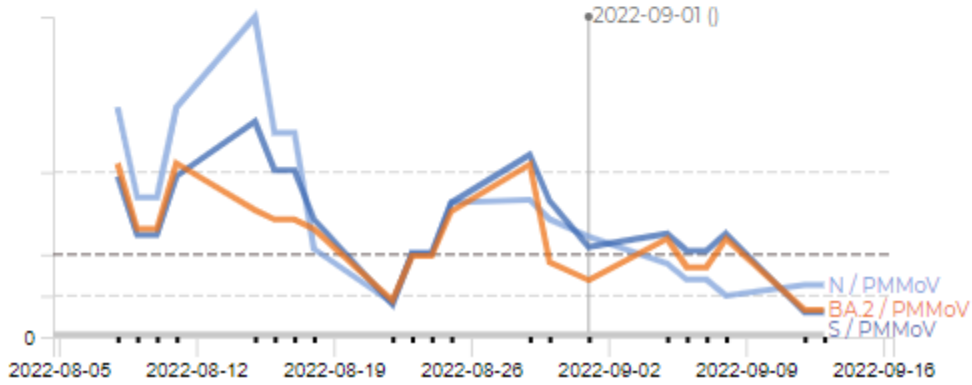


COVID-19 Wastewater Surveillance

Modesto



Turlock



<https://healthycvtogether.org/data/stanislaus-county-wastewater-data/>