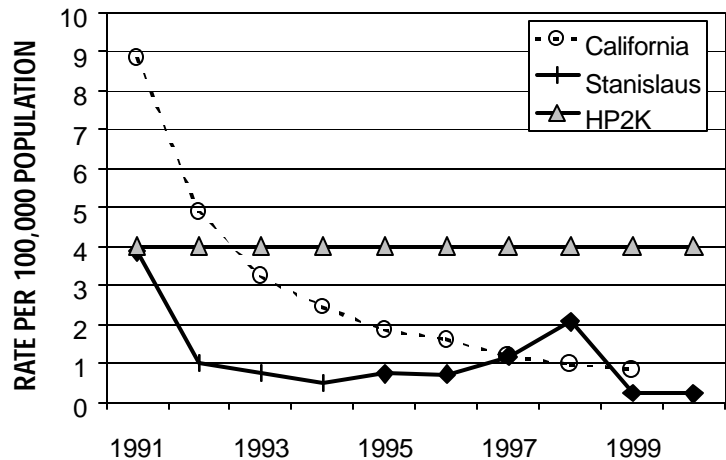


## Syphilis

Syphilis has been on the decline in California now for several years. There is a concerted effort now to not only maintain the low incidence of new cases of syphilis but to push for its elimination altogether.

Stanislaus County had some outbreaks of new cases in 1998, but has been able to contain the spread, which has kept the rate beneath California's overall rate and much below the national objective.

REPORTED RATE OF 1° AND 2° SYPHILIS, CA AND STANISLAUS CO, 1991-2000

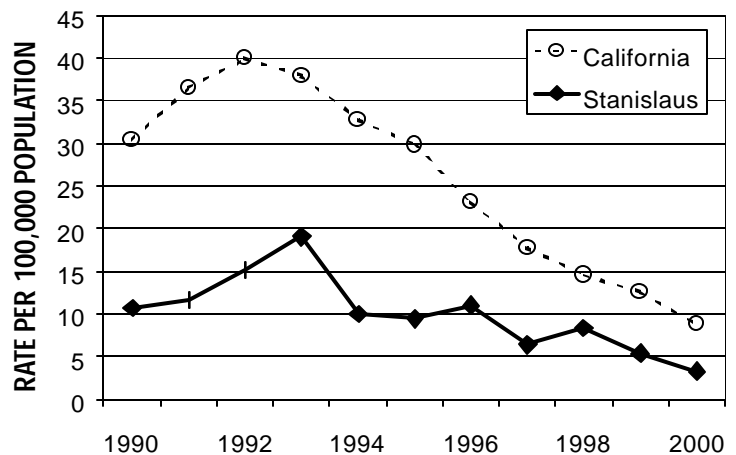


## AIDS

The rate of newly diagnosed cases of AIDS in Stanislaus County has always been much lower than the California average, but in recent years, both rates have dropped significantly. This could be due to several factors.

Individuals could be lessening their risk, but most certainly, the availability of treatment for this infection has led to a decline in the number of individuals who have progressed to the point of being diagnosed with an AIDS defining illness.

REPORTED RATE OF AIDS, CA AND STANISLAUS CO, 1990-2000

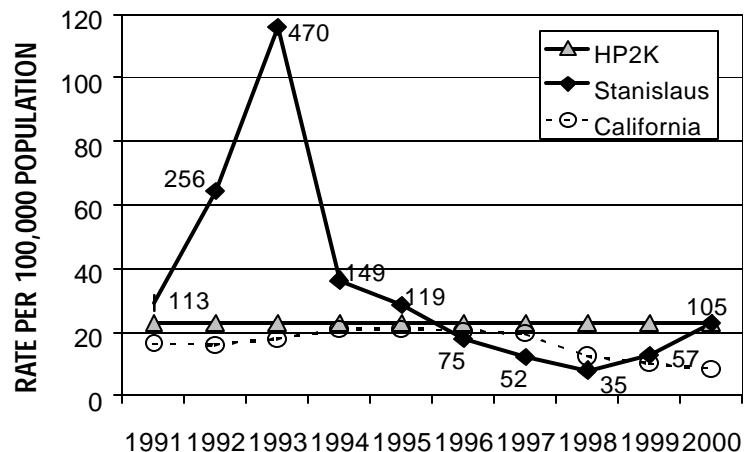


## Hepatitis A

This infection can be prevented by having good hygiene. It can also be prevented through vaccination. Both Stanislaus County and California have reached the national objective for the year 2000, but it can be seen that periodic outbreaks of the disease occur every few years.

It is expected these infections will continue to decline as more children become vaccinated against it.

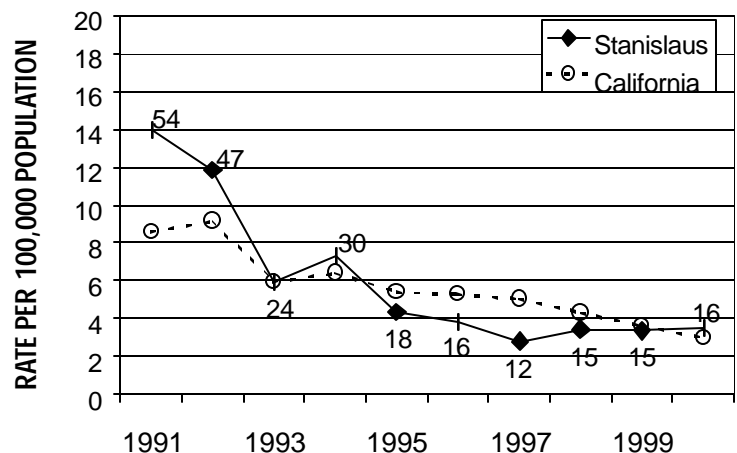
**TOTAL REPORTED CASES OF HEPATITIS A, CA AND STANISLAUS CO, 1991-2000**



## Hepatitis B

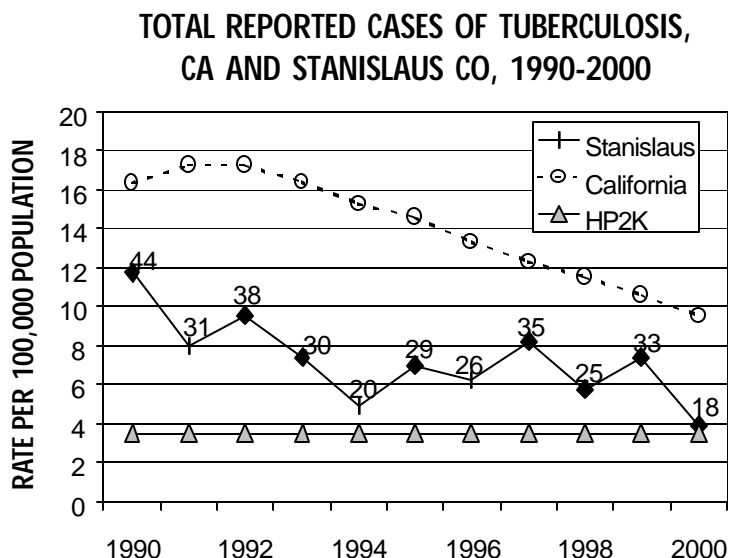
The rate of acute hepatitis B has been declining for several years now. With the new laws requiring students entering kindergarten and 7<sup>th</sup> grade to be up-to-date with the vaccinations against Hepatitis B, it is expected that this serious infection of the liver will continue to decline.

**RATE OF REPORTED ACUTE HEPATITIS B, CA AND STANISLAUS CO, 1991-2000**



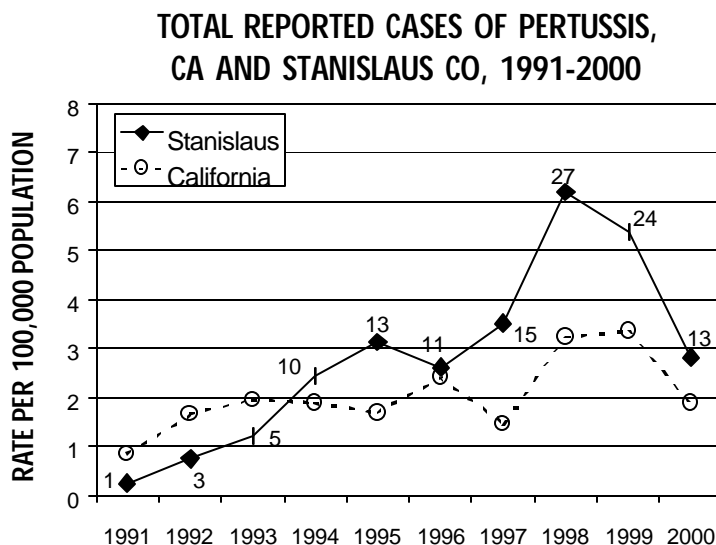
## Tuberculosis

The rate of tuberculosis in Stanislaus County has consistently remained well below that of California. The severity of cases has increased due to the tuberculosis bacteria becoming resistant to multiple antibiotics. This provides a significant challenge to Public Health. Stanislaus County has come close to reaching the Year 2000 National Objective, but has not been able to sustain that level.



## Pertussis (whooping cough)

There has been a slight rise in the rate of pertussis in both California as well as Stanislaus County. Several cases of this disease have occurred among very young infants who have not been old enough to be vaccinated against this disease. Many times adults, whose immunity has waned over the years, have exposed infants to the bacteria. There continue to be cases in individuals who have not been immunized. This underscores the need to continue vaccination efforts for all vaccine preventable diseases.

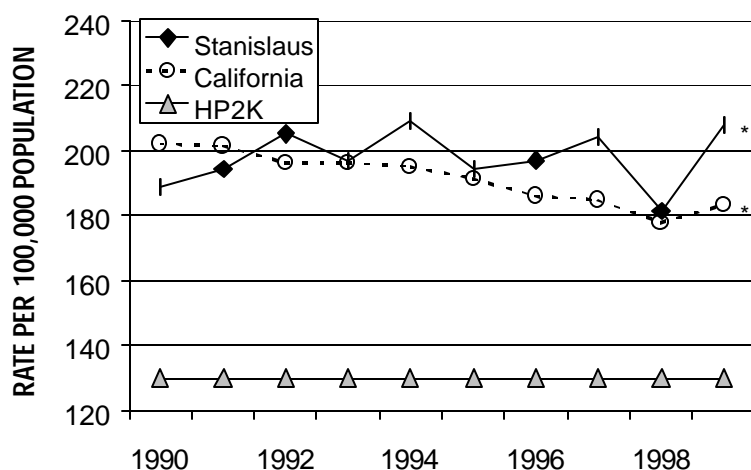


# Deaths

## All Cancer

Deaths due to all types of cancer continue to be the second largest cause of death. Neither California as a whole nor Stanislaus County is making much progress toward reaching the national goal.

**AGE ADJUSTED RATE OF DEATH DUE TO ALL CANCERS, CA AND STANISLAUS CO, 1990-1999**



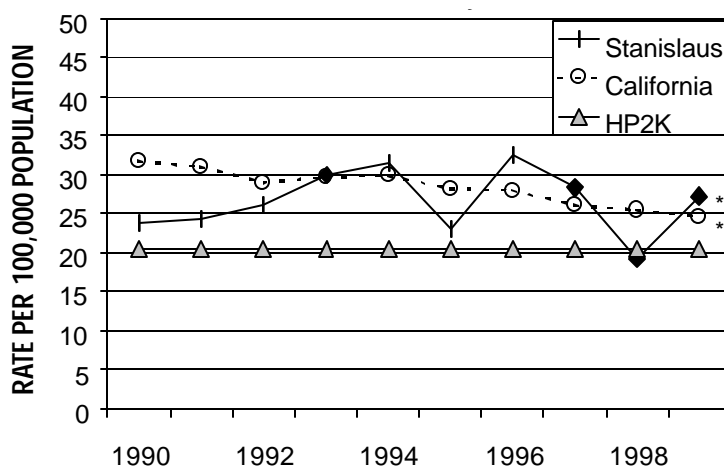
### \* Data Note

The asterisk next to all of the estimates for 1999 death rates is to alert the reader that a new classification of disease was used for the coding of 1999 deaths. Data prior to 1999 were coded using the International Classification of Diseases, 9<sup>th</sup> Revision (ICD-9), but starting in 1999 California began to use ICD-10. This means that some of the differences in rates between 1998 and 1999 could be due to classification issues and not due to any real change in the population's health at all.

## Breast Cancer

Deaths to Breast Cancer among women have been quite steady over the years. The age-adjusted rate for Stanislaus did dip below the national objective, but bounced up again in 1999. As diagnostic tests and treatment continue to improve, it becomes imperative that women get their preventative mammograms, as early detection is the best way to decrease these deaths.

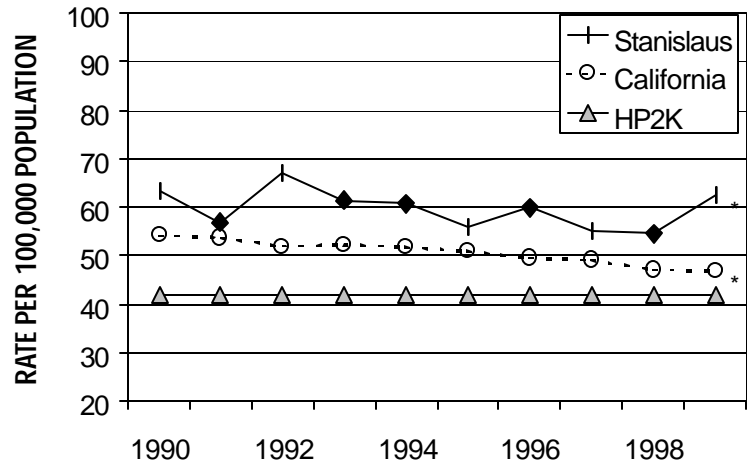
**AGE ADJ. RATE OF DEATH DUE TO BREAST CANCER, CA AND STANISLAUS COUNTY, 1990-1999**



## Lung Cancer

Neither California nor Stanislaus County has reached the national goal for this cause of death. Stanislaus County has had higher rates of death due to lung cancer than the state for several years.

AGE ADJUSTED RATE OF DEATH DUE TO LUNG  
CANCER, CA AND STANISLAUS CO, 1990-1999



## Motor Vehicle

Stanislaus County is fast approaching the national goal for the year 2000 in this category, but is still significantly higher than California as a whole and has been for several years. This is the most common cause of unintentional injury death in this county.

AGE ADJUSTED RATE OF DEATH DUE TO MOTOR  
VEHICLES, CA AND STANISLAUS CO, 1990-1999

