

COVID-19 RESPONSE

SURVEILLANCE REPORT: June 27- July 10, 2021

"Healthy People in a Healthy Stanislaus"

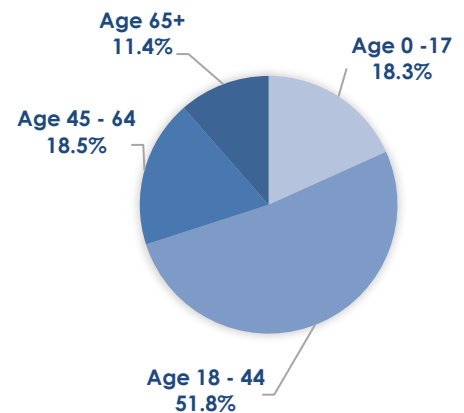
Overview

- During these two weeks, COVID-19 case numbers are a little higher than the week prior overall.
- Stanislaus County has not confirmed any COVID-19 deaths for the week ending June 5, 2021. This has not happened since the first COVID-19 death in Stanislaus County was confirmed April 10, 2020.

COVID-19 MONITORING

New Positive Cases	Report Weeks			Total		
	Count	%	Rate*	Count	%	Rate*
Age 0-17	67	18.3%	0.47	7,020	12.2%	49.29
Age 18-44	190	51.8%	0.91	28,525	49.5%	136.87
Age 45-64	68	18.5%	0.53	15,383	26.7%	119.66
Age 65+	42	11.4%	0.51	6,676	11.6%	80.85
TOTAL	367	-	-	57,604	-	-
Total Tests Reported	14,665			764,151		
Deaths	5	-	-	1,078	-	-

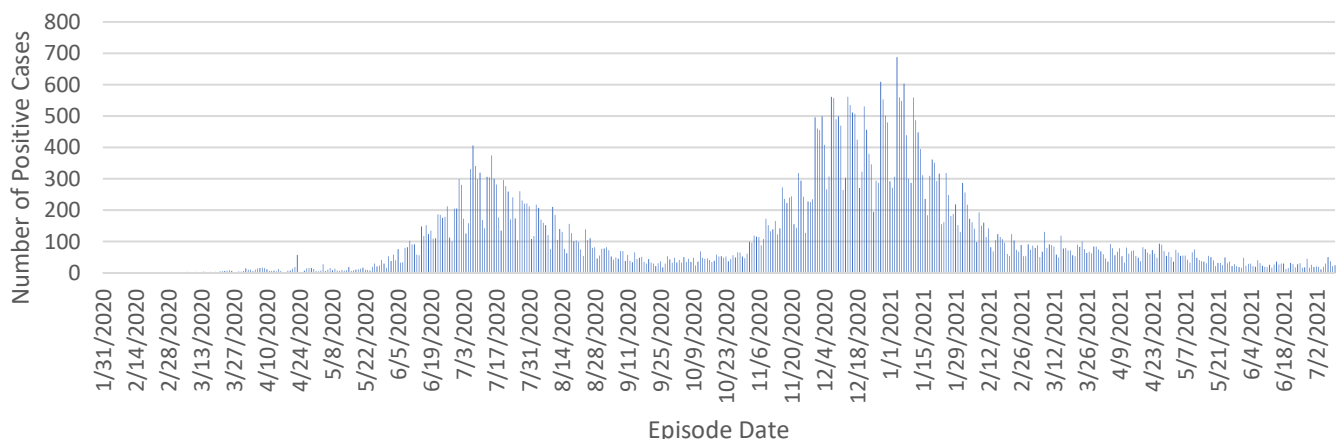
REPORT WEEKS CASE % BY AGE GROUP



*Rate per 1,000 population; Data Source: California Department of Finance

This graph shows the daily number of unique COVID-19 confirmed positive cases reported among Stanislaus County residents by the case's episode date. The episode date is the earliest date a person is known to have the virus and is determined using a few variables including symptom onset date and the date they were tested.

Stanislaus County COVID-19 Epi Curve



Note: Due to delays in specimen processing, totals for the past two weeks may be incomplete.

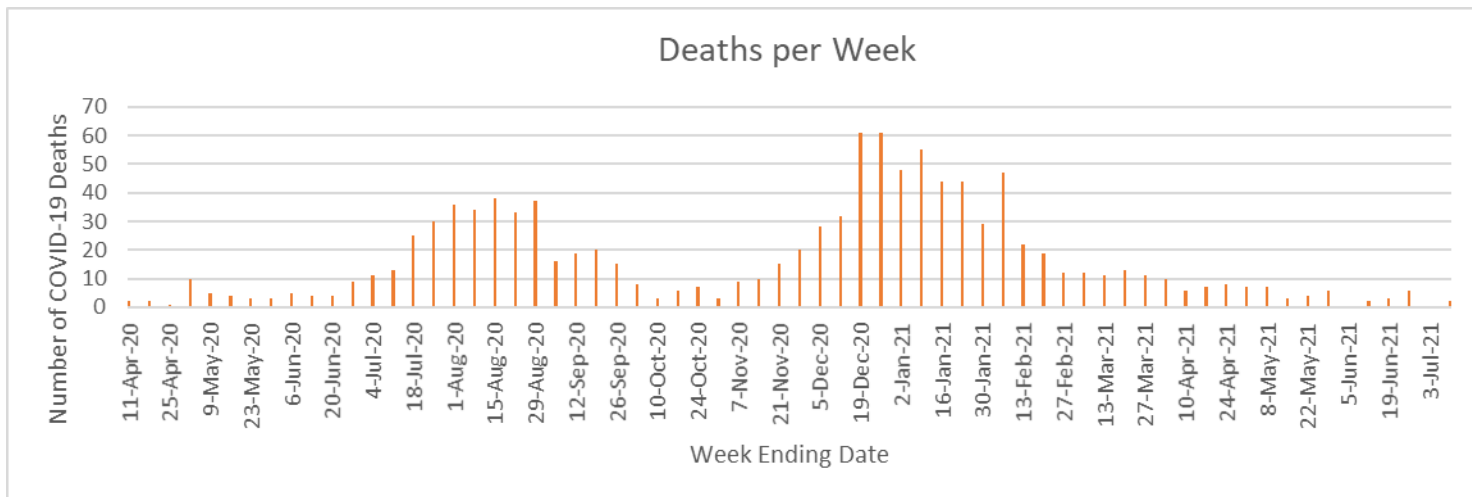
Reported COVID-19 cases and deaths on this page are those that have been confirmed by Stanislaus County Public Health.

Last Updated on July 16, 2021

Unrestricted

Page 1 of 3

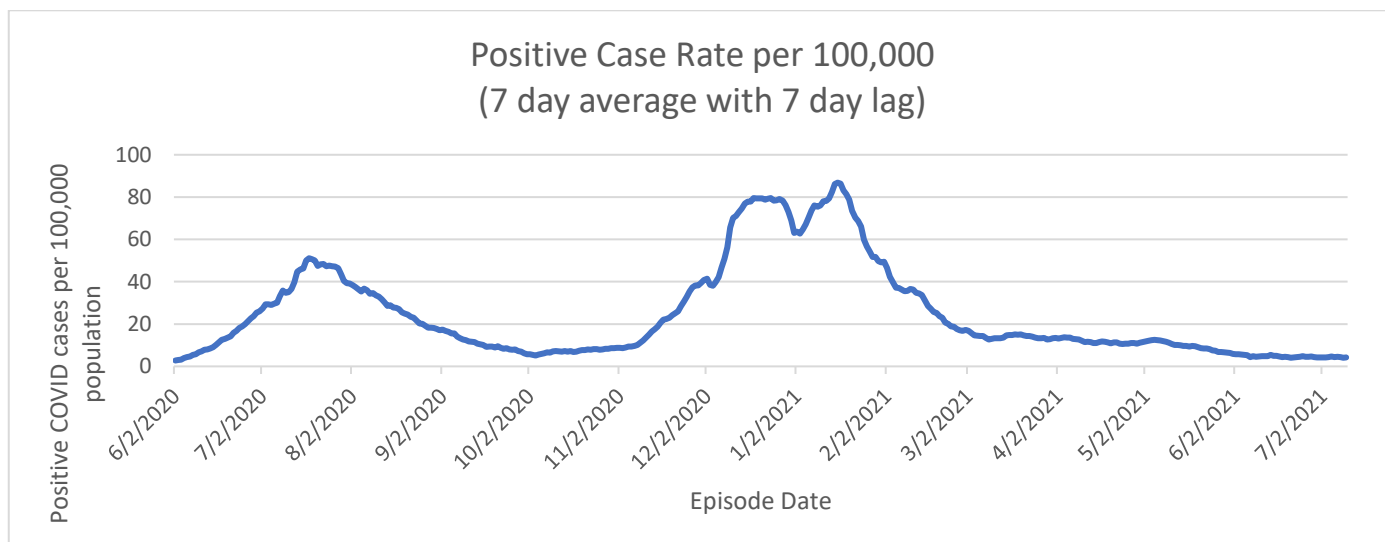
The items contained are only the information known at the time of the entry and are subject to change at any time under any circumstance.



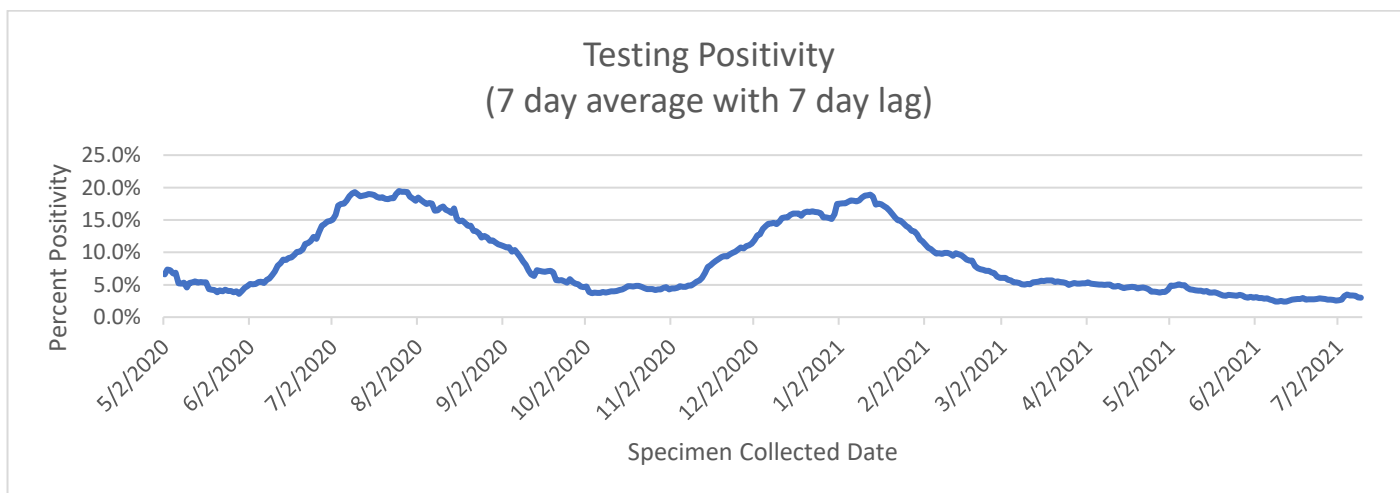
Note: Due to delays in death reporting and assessment, totals for the past two weeks may be incomplete.

Reported COVID-19 cases and deaths on this page are those that have been confirmed by Stanislaus County Public Health.

The graph below shows positive case rate (number of positive cases per 100,000 county population), 7-day average with 7 day lag, through the report week. This does not include the state adjustments and may vary from state measures.



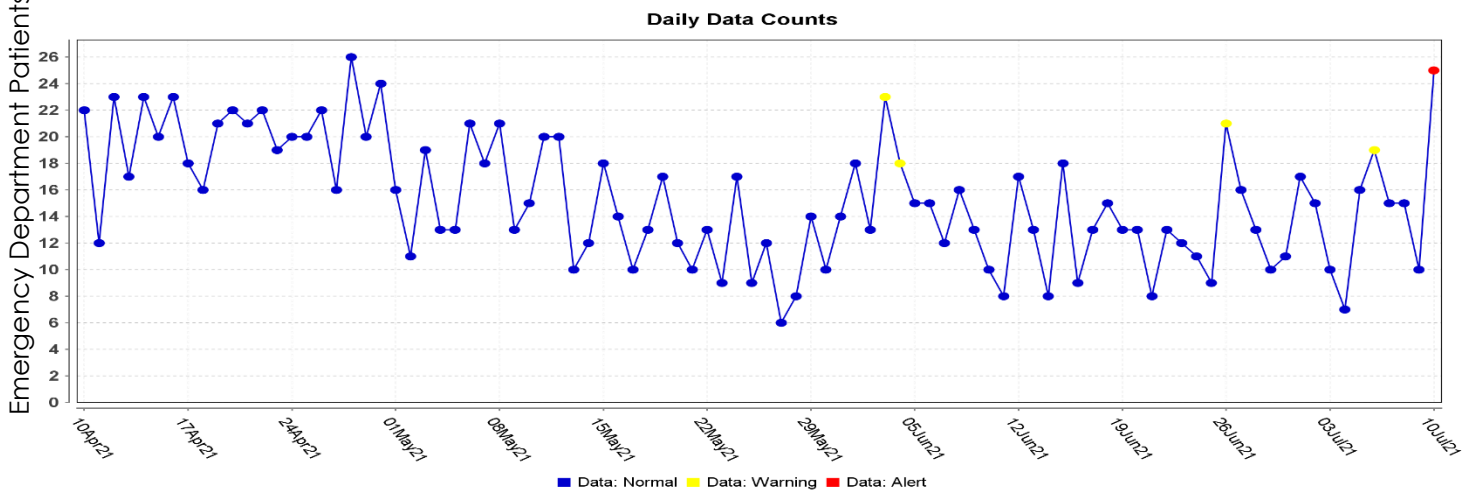
The graph below shows testing positivity (percent of tests that are positive), 7-day average with 7-day lag, through the report week. This may vary from state measures.



COMMUNITY MONITORING – EMERGENCY CASES

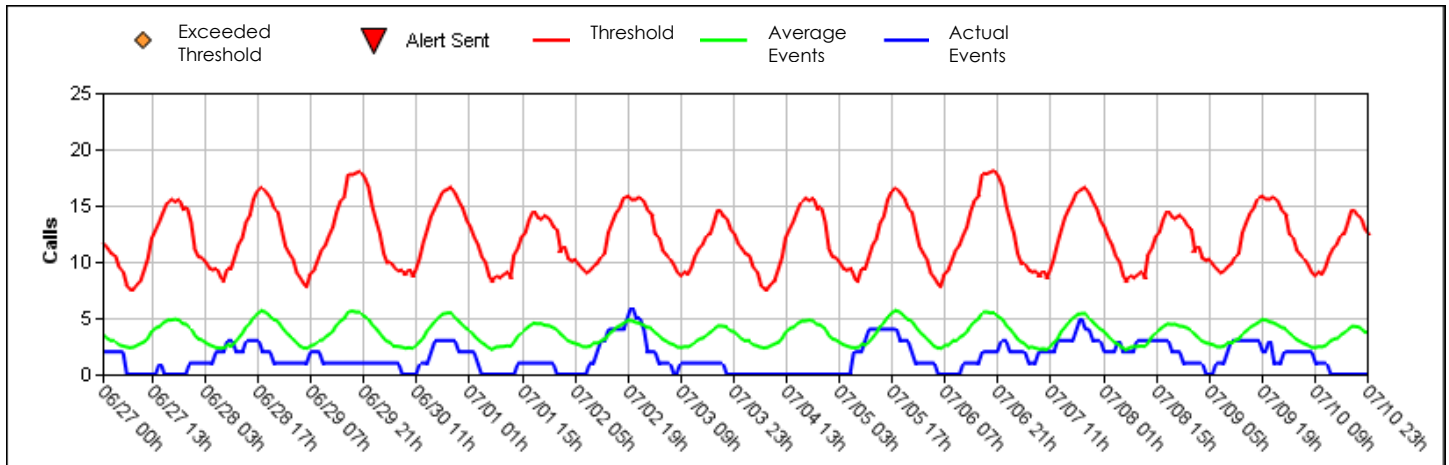
COVID-19 LIKE ILLNESS

This graph shows the number of emergency room visits for COVID-19-like illness for all Stanislaus County Hospitals.



Mountain Valley EMS COVID-19 Responses

This graph shows the ambulance calls (blue) for COVID-19 related situations compared to the threshold of concern (red).



COVID-19 OUTBREAKS BY INDUSTRY

Current Outbreaks as of July 16, 2021:

	Number of Open Outbreaks	Open Outbreaks Newly Reported in last 2 weeks
Public safety, including police, fire, and correctional institutions	2	2
TOTAL	2	2