

Respiratory Virus Surveillance Report

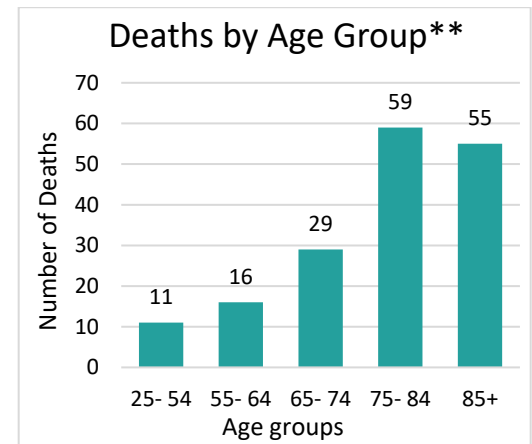
SURVEILLANCE REPORT: Feb 18 – Mar 02

Overview

- COVID-19 Cases and Percentage of positive tests have been stable.
- Influenza, RSV and COVID-19-related Emergency Department visits have been stable.
- Wastewater data shows Modesto's and Turlock's RSV, Influenza and COVID have decreased.

COVID-19 MONITORING

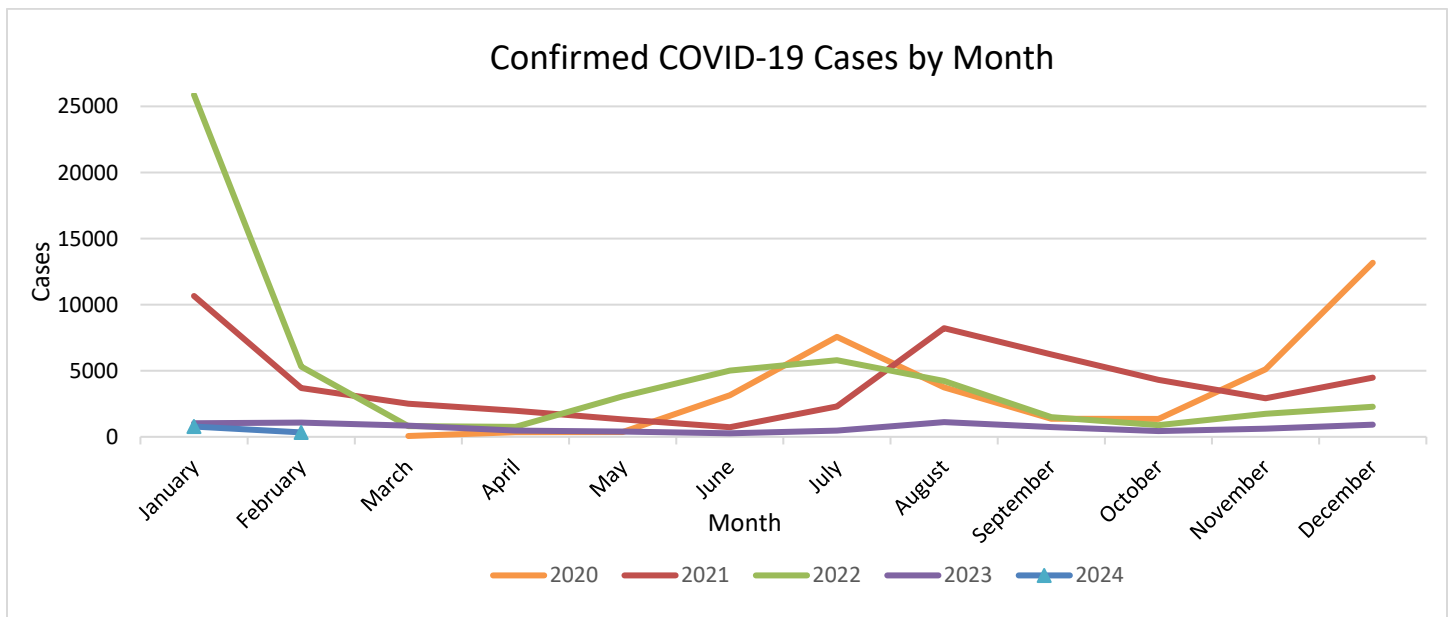
Age	Report Weeks			Fiscal Year: 22/23		
	Count	%	Rate	Count	%	Rate*
0-17	63	17.9%	0.24	3,137	14.7%	21.01
18-44	56	27.9%	0.27	8,414	39.5%	40.17
45-64	48	23.9%	0.37	5,456	25.6%	42.25
65+	61	30.3%	0.82	4,260	20.0%	57.28
Total	201	-	-	21,291	-	-
Deaths	1	-	-	170	-	-



*Rate per 1,000 population; Data Source: California Department of Finance

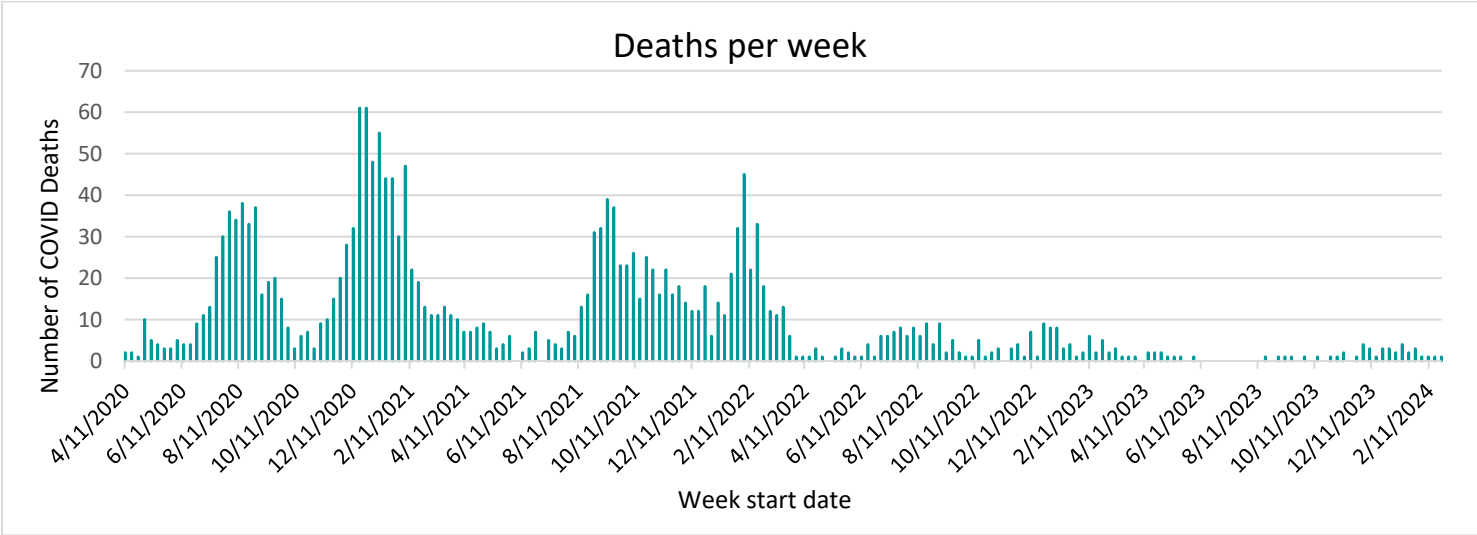
** Total Deaths from July 1, 2022, through June 30, 2023. Age groups with less than 10 deaths are not displayed.

This graph shows the daily number of COVID-19 confirmed cases reported among Stanislaus County residents by episode date.



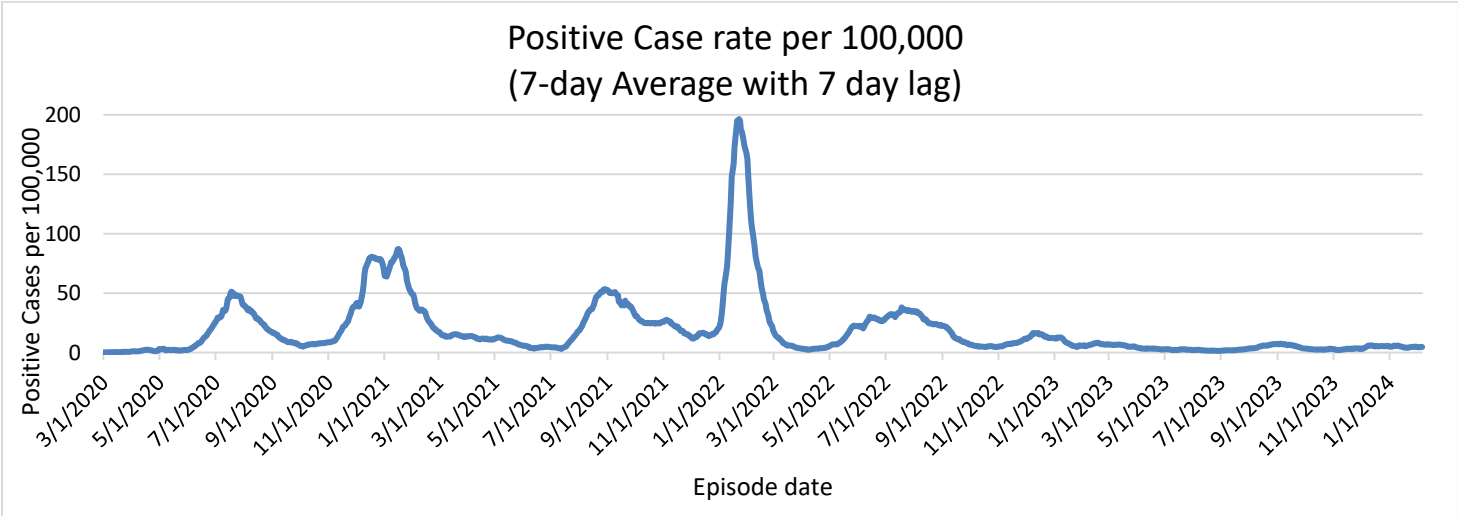
Note: Due to delays in specimen processing, data may be incomplete.

Reported COVID-19 cases and deaths on this page are those that have been confirmed by Stanislaus County Public Health.

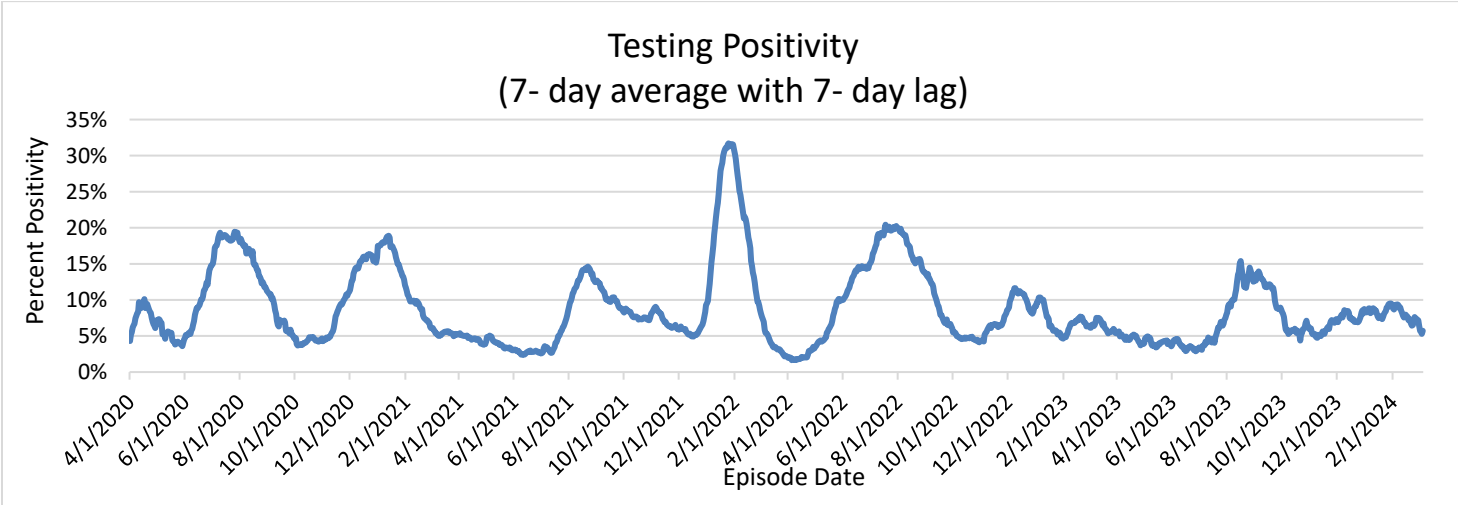


Note: Due to delays in death reporting and assessment, data may be incomplete. Reported COVID-19 cases and deaths on this page are those that have been confirmed by Stanislaus County Public Health.

The graph below shows positive case rate (number of positive cases per 100,000 county population), 7-day average with 7-day lag, through the report week. This does not include the state adjustments and may vary from state measures.



The graph below shows testing positivity (percent of tests that are positive), 7-day average with 7-day lag, through the report weeks. This may vary from state measures.

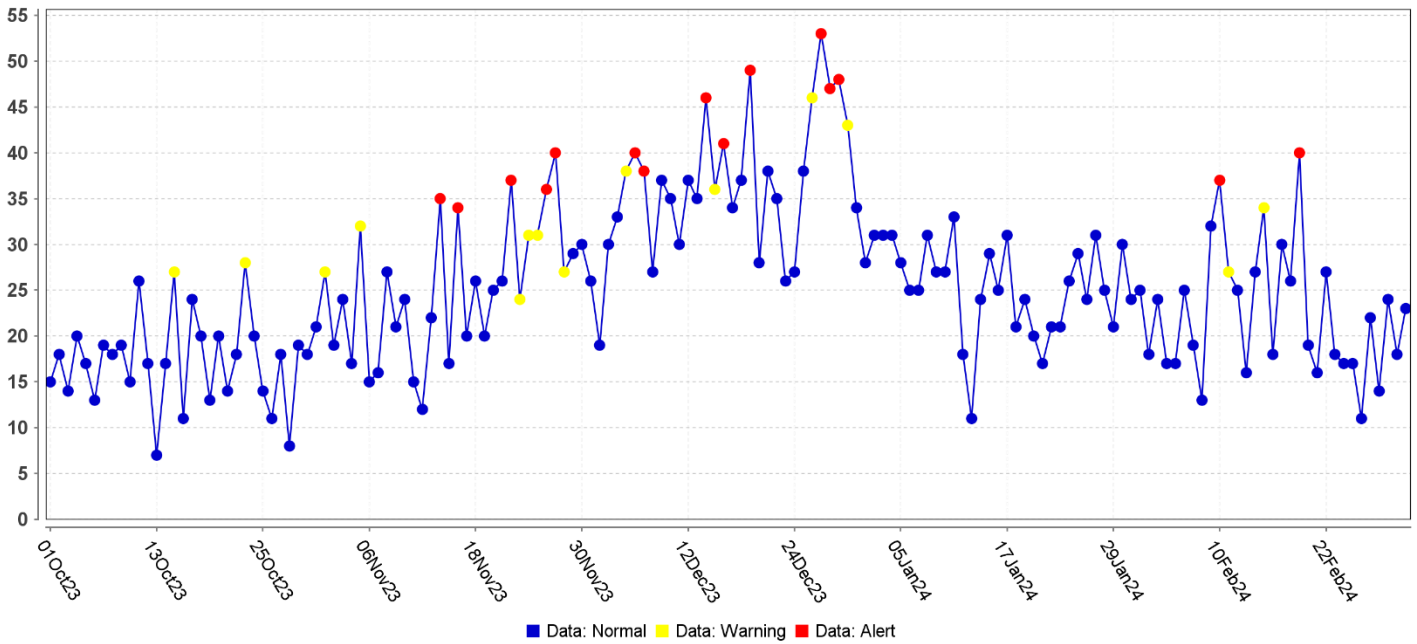


COMMUNITY MONITORING – EMERGENCY CASES

COVID-19 LIKE ILLNESS

This graph shows the number of emergency room visits for COVID-19-like illnesses for all Stanislaus County Hospitals.

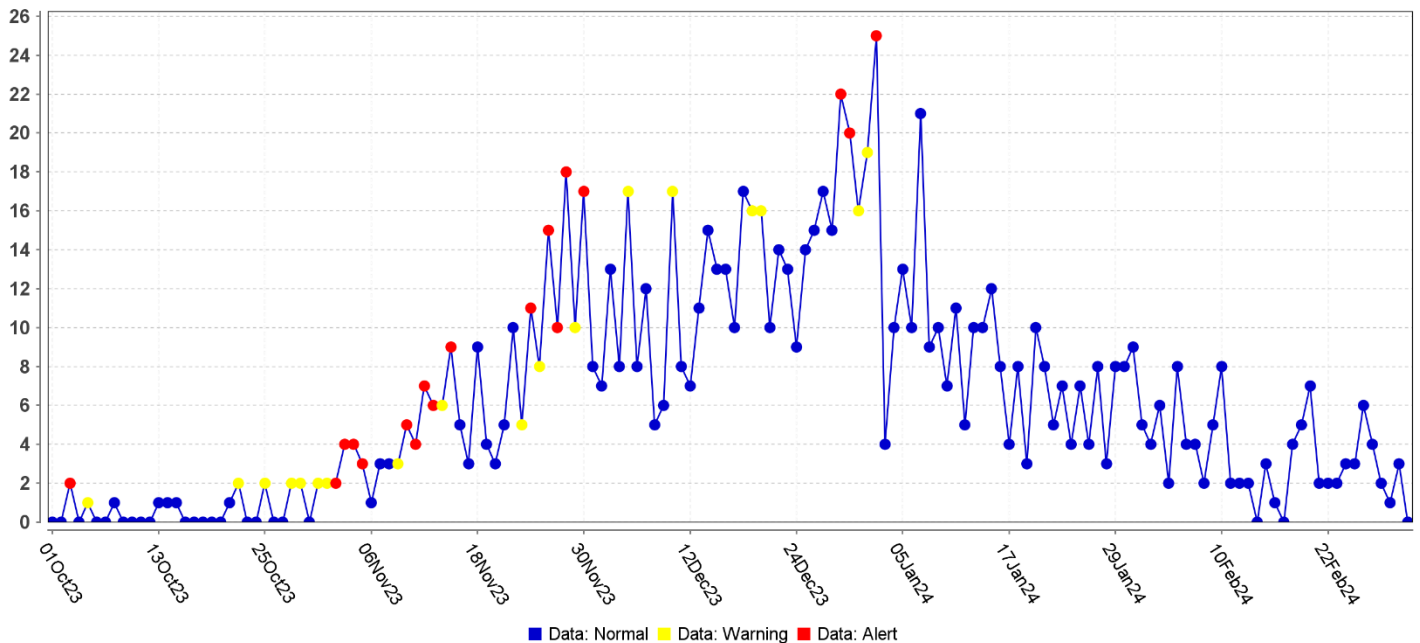
Daily Data Counts



RSV MONITORING

This graph shows the number of emergency room visits for RSV for all Stanislaus County Hospitals.

Daily Data Counts

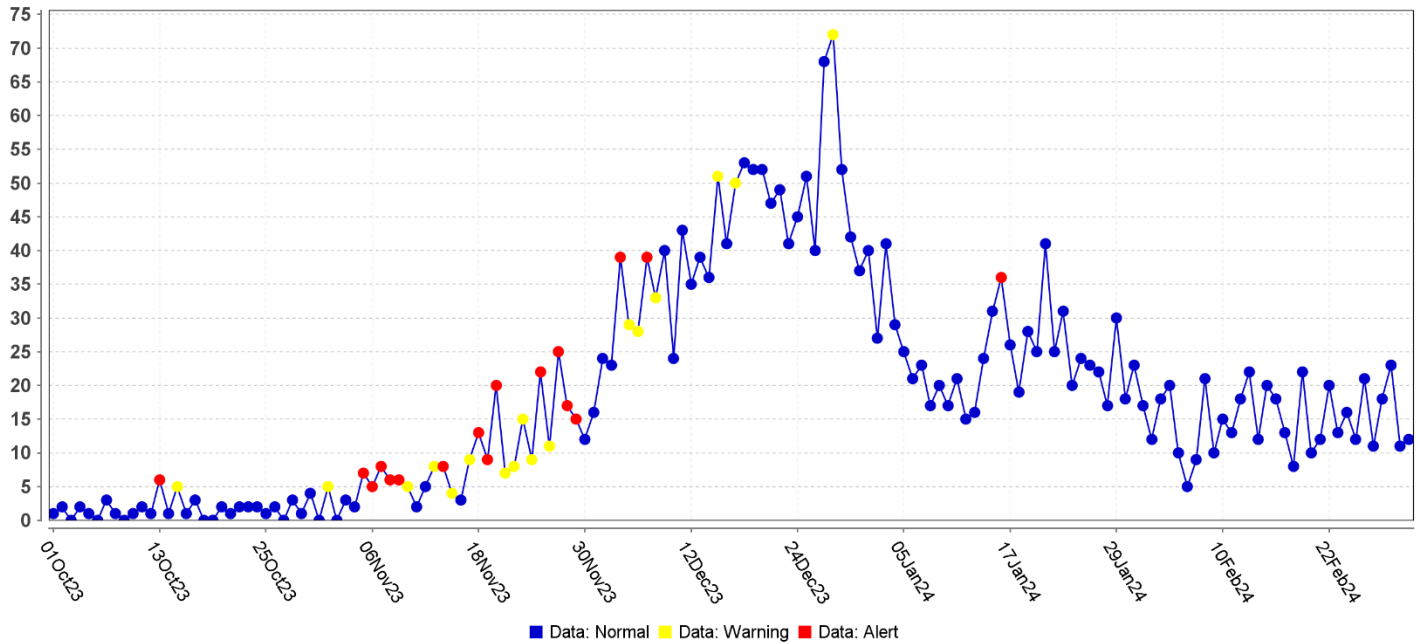


INFLUENZA MONITORING

Influenza-like illness

This graph shows the number of emergency room visits for Influenza-like illness complaints for all Stanislaus County Hospitals.

Daily Data Counts



SEVERE INFLUENZA

This chart shows the number of people who are in the intensive care unit and the deaths of children under 18 from influenza.

	Report Weeks	This Influenza Year
Intensive Care Unit	0	15
Death under 18 years old	0	0

The influenza year begins MMWR week 40, this year beginning on October 1.

Laboratory detections of respiratory viruses other than COVID-19

This chart looks at how many samples were tested for different kinds of influenza-like illness by the regional San Joaquin Public Health Laboratory (including Stanislaus County specimens), during the report weeks, and how many were positive, in order to monitor what is currently spreading in the area.

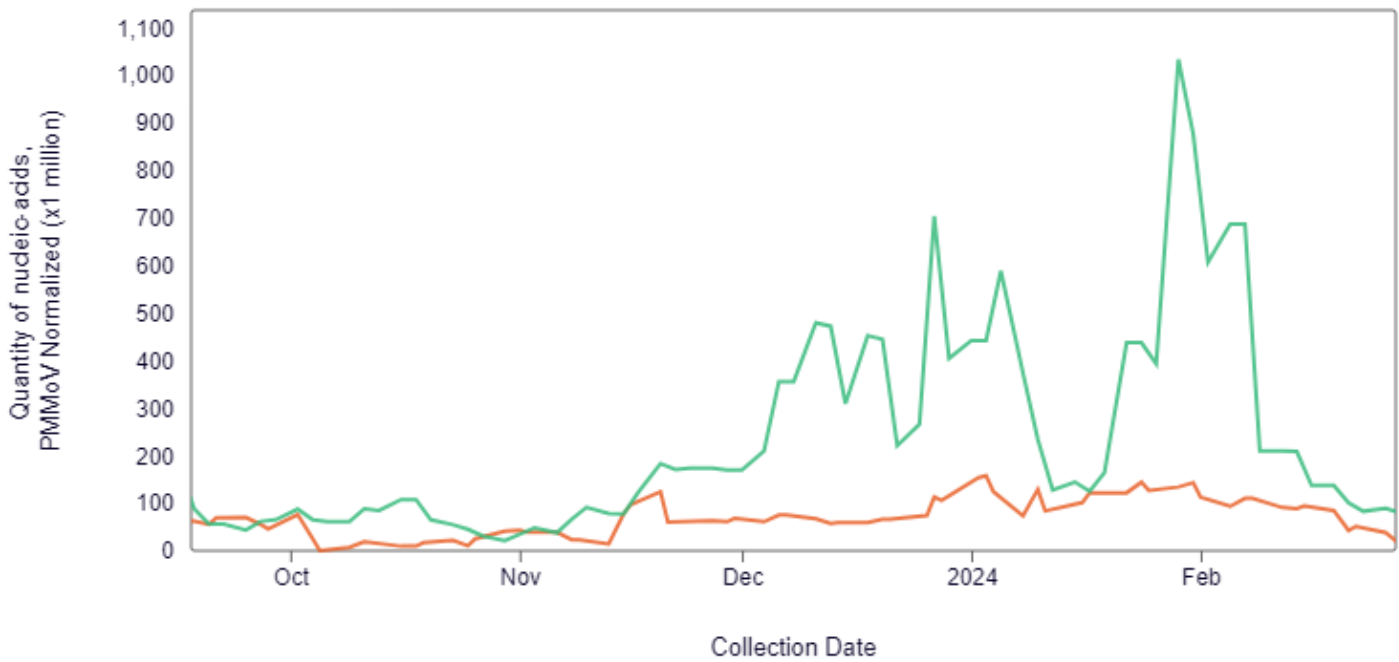
	Report Weeks		This Influenza Year	
	Samples Tested	Positive Tests	Samples Tested	Positive Tests
Influenza A	24	0	395	83
Influenza B	24	0	395	10
RSV	24	2	309	53
Parainfluenza	24	1	309	23
Adenovirus	24	2	309	20

Rhinovirus/Enterovirus	24	11	309	96
Human Metapneumovirus	24	2	309	10
Non-COVID-19 Coronaviruses	0	0	0	0

Table reference reflects the San Joaquin Public Health lab testing numbers.

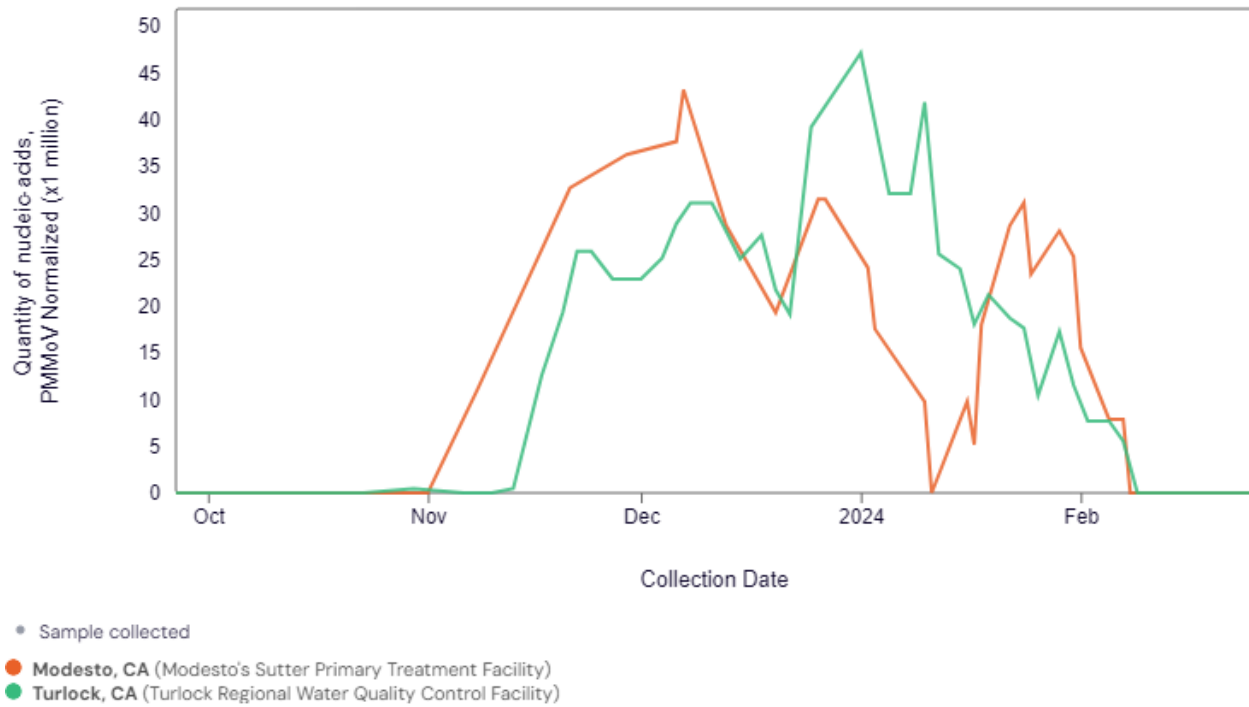
COMMUNITY MONITORING – WASTEWATER SURVEILLANCE COVID-19

SARS-CoV-2, Stanislaus, CA

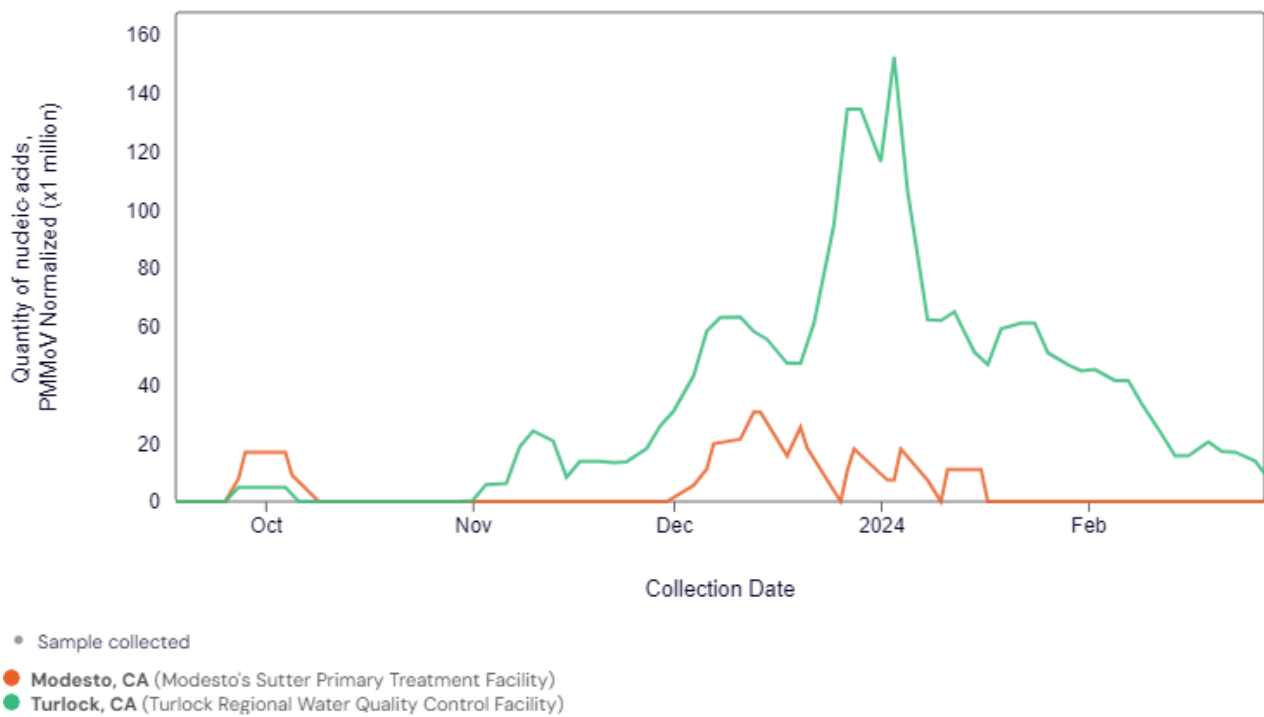


- Sample collected
- Modesto, CA (Modesto's Sutter Primary Treatment Facility)
- Turlock, CA (Turlock Regional Water Quality Control Facility)

Influenza A, Stanislaus, CA



RSV, Stanislaus, CA



Source:

<https://data.wastewaterscan.org/tracker?charts=CjwQACABSABSBmZIZDk3ZlIGYWQ4NmE5WgNSU1ZyCjIwMjMtMDYtMDFyCjIwMjMtMTEtMDmKAQY0NmYyOTI%3D&selectedChartId=46f292>