



Functional Needs Support and Deployment

2011 National UASI and Homeland Security Conference
Medical Track Session Two



Moderator:

Renee Cartier, Stanislaus County Dept of Public Health

Speakers:

Rebecca Ciszek, American Red Cross
Kristin Beck, SEPA Regional Task Force
Robyn Slater, SEPA Regional Task Force
Chad Thomas, SEPA Regional Task Force

OVERVIEW

This session summarizes selected functional needs support practices. Presenters will demonstrate their collaborative efforts for implementing strategies to accommodate functional needs and share their expertise in extensive large scale medical response system planning and exercising with emphases in special populations, public information and public health.

SESSION OBJECTIVES

- Provide information about multi-state and regional public health preparedness initiatives.
- Share lessons learned
- Present best practices for MRC units
- Provide information about the successes and challenges reaching vulnerable populations



**American
Red Cross**



Renee Cartier
Emergency Manager
Stanislaus County Public Health

Rebecca Ciszek
Regional Manager Stanislaus
American Red Cross Capitol Region

FACILITY USE ASSESSMENTS: A MULTI-AGENCY COOPERATIVE EFFORT

OBJECTIVES

- ① Describe historical activities
- ① Describe establishment of Facility Use Collaborative and defined goals and processes
- ① Describe training, use, and maintenance of tool
- ① Discuss strengths, weaknesses, and opportunities

HISTORY

◎ 2007

- Assembled over 40 agencies representing functional needs population establishing “Special Pops” Planning Committee

◎ 2008

- Richard Devylder, Special Advisor to the Director of the Governor’s Office of Emergency Services and Lead to the Office of Access and Functional Needs Seminar
- Proposal to Operational Area Council (OAC)

OAC PROPOSAL

- ① Identify team participants and develop a facility site evaluation survey
- ① Define roles and responsibilities for each agency
- ① Develop policies and procedures
- ① Develop and establish MOUs for agencies and facilities

OAC PROPOSAL

⦿ Facility Uses:

- Government-operated alternate care sites
- Cooling/Heating Centers
- General population shelters
- Mass prophylaxis distribution (POD)
- Special needs (Medical) shelter
- Safe schools

OAC PROPOSAL

- Provides a systematic approach to facility evaluations that addresses participating agency needs
- Streamlines and maximizes efficiencies, non-duplication of effort
- Furnishes centralized information and access
- Enhances partnerships and collaboration

FACILITY USE COLLABORATIVE

- Representatives from American Red Cross, Disability Resources Agency for Independent Living (DRAIL), Stanislaus County Department of Environmental Resources, Community Services Agency, Office of Emergency Services, Animal Services, Office of Education, and Public Health

FACILITY USE COLLABORATIVE

- Samples of existing assessments collected and compiled (i.e. DOJ, FEMA, CDC, multiple jurisdictions, polling assessment) and a final assessment form developed
- Samples of MOU's collected and agency roles and responsibilities defined.
- Assessment coordinator appointed.

FACILITY USE COLLABORATIVE

- Each agency volunteered staff to perform site assessments, resulting in over 30 participants
- Two trainings conducted
- Coordinator orchestrated the site evaluations utilizing trained teams
- Community Services Agency collected assessments and input data

TRAINING

- Training staff to perform assessments is one of the most critical areas to ensure completeness and accuracy.
- These staff are considered team leaders, coordinating members during the assessment process.
- American Red Cross and Coordinator provided hands-on training.

TRAINING

- ◎ The following resources were used during the training process:
 - United States Department of Justice's ADA Checklist for Emergency Shelters.
 - Accessibility FAQ's
 - Stanislaus County ADA Glossary and Symbol Key
 - Stanislaus Collaborative Facility Resource Survey for Field Completion

TRAINING

- ⦿ Assemble assessment kits containing the following inventory:
 - (1) 25' measuring tape
 - (1) 100" tape measure
 - (1) 1000' measuring wheel
 - (1) Craftsman digital measure with soft case
 - (1) 19" Denier nylon fabric tool bag
 - (1) Plastic clipboard
 - Pencils, pens, and assessment forms

COORDINATOR DUTIES

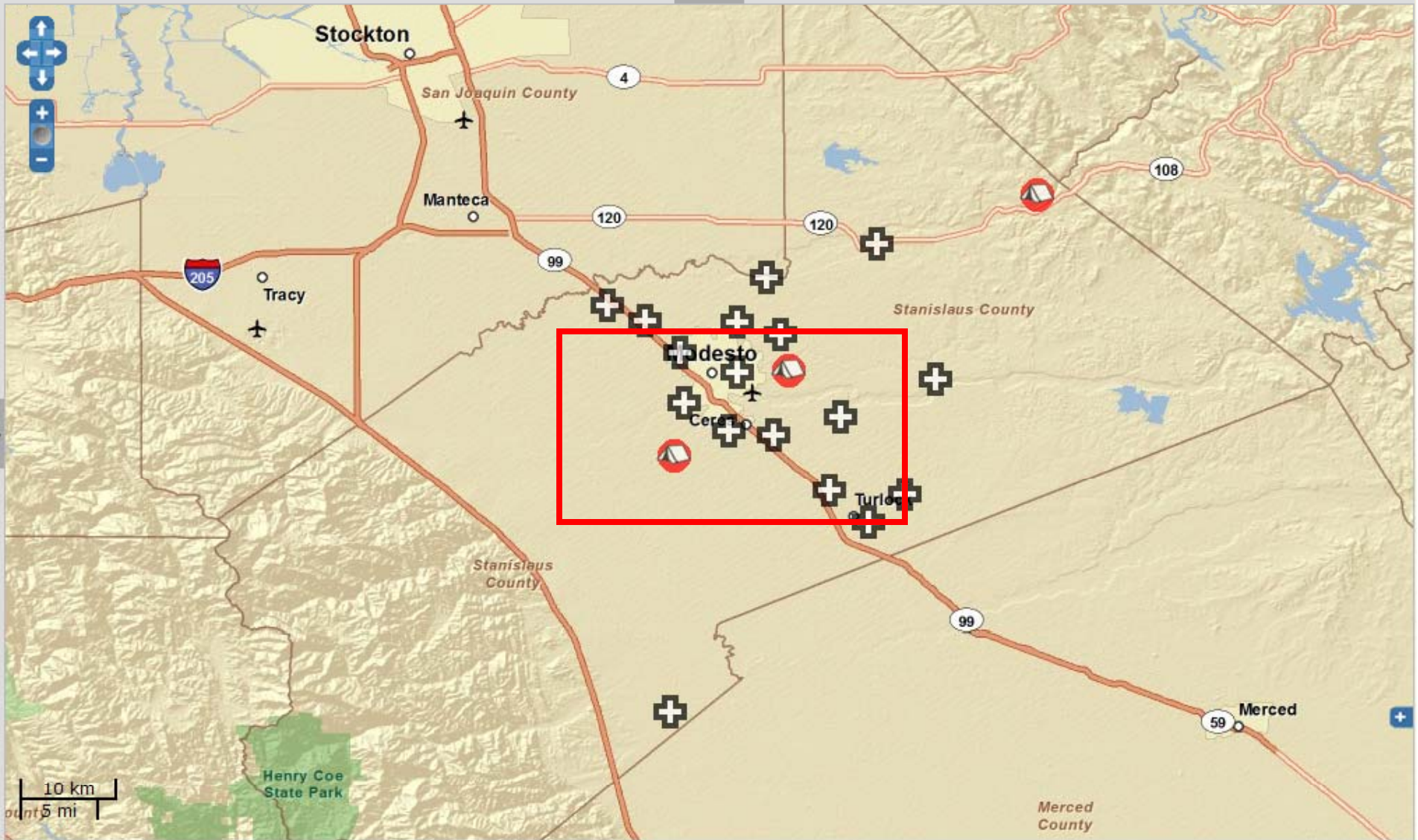
- Collaborated with County Office of Education and local school district superintendents.
- Trained assessment teams.
- Made initial contact with 90+ sites.
- Scheduled assessments and teams.
- Quality assurance.

FACILITY RESOURCE SURVEY

⦿ Components

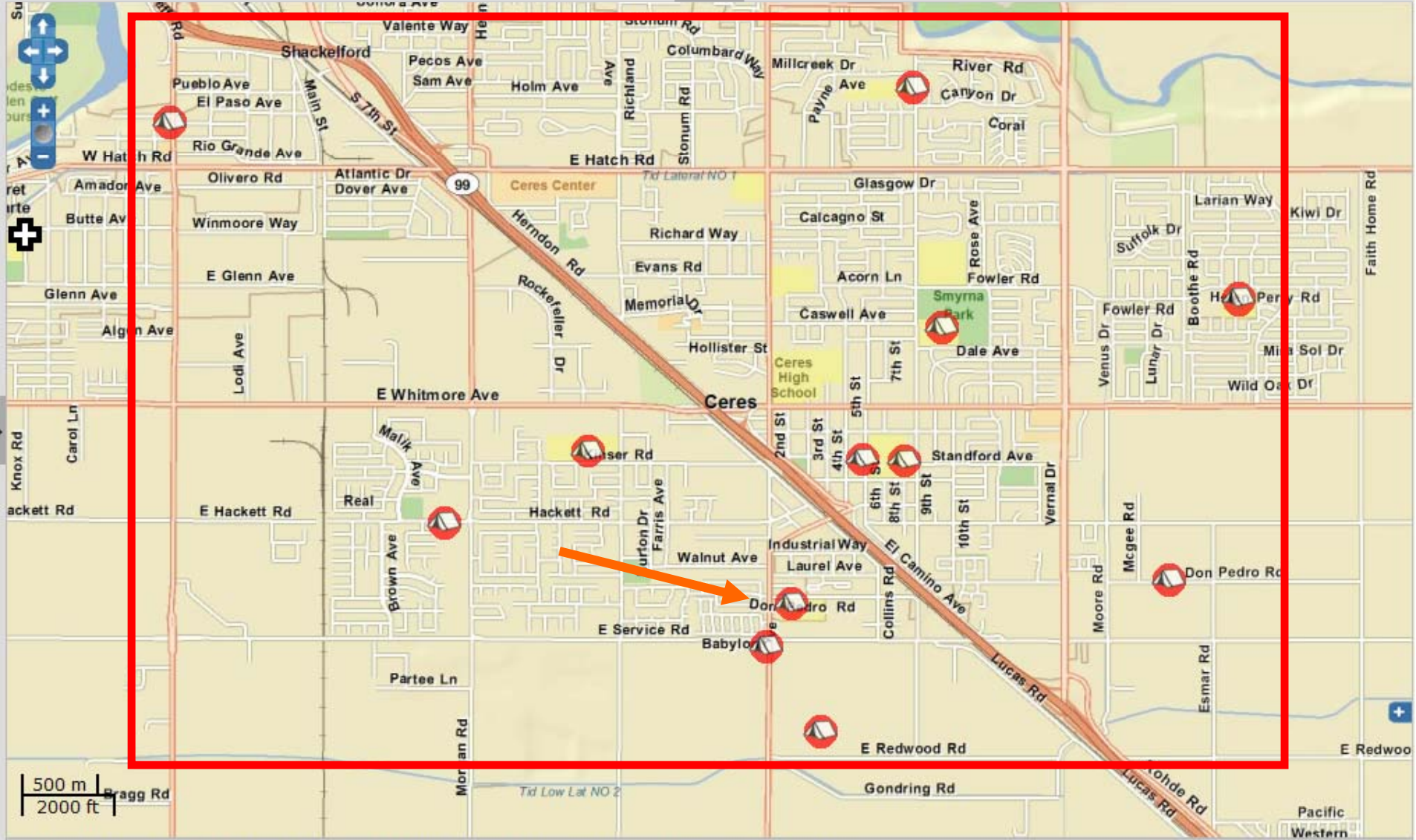
- Facility Pre-Assessment Questionnaire
- Stanislaus County ADA Glossary and Drafting Symbol Key
- Site Assessment Worksheet
- Resource Survey for Field Completion
- Facility Resource Diagram
- Facility Evaluation Form
- See PDF's

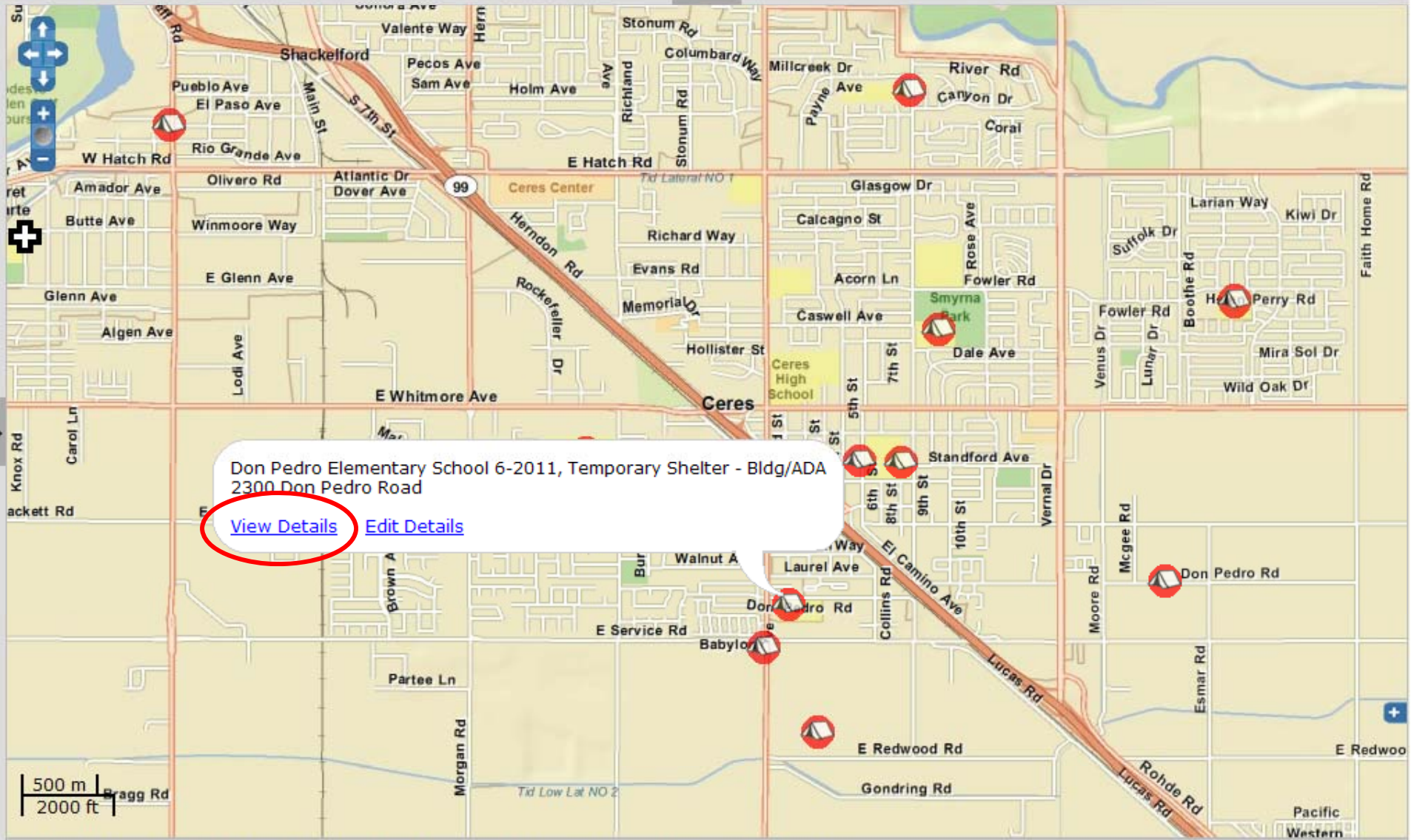
DATA MAINTENANCE AND ACCESS



Scale: 1:433K Zoom: 8 -120.85105, 37.35585 EPSG:4326 Center = -120.99662, 37.59549

NC4 Universal Console







Shelter Report

Help

Print

Close

*Red Label: indicates a required field.

- Basic Info
- Notification
- Geo-Location
- Attachments & Overlays
- Distribution & Sharing

WHAT IS THE CURRENT STATUS OF THIS SHELTER?

***Status:**

Red--Not Activated

WHAT INFORMATION CAN YOU PROVIDE ABOUT THIS SHELTER?

***Name:**

Don Pedro Elementary School 6-2011

***Type:**

Temporary Shelter - Bldg/ADA

***Capacity:**

***Total Capacity:** 63

***Currently Sheltered:** 0

Available: 63

Agency Running Shelter:

Related Event/Incident/Activity:

Not Related to an Event, Incident, or Activity

Contact Person:

Rick Hall, Principle 209-556-1630 Deanna Dunn, Administrative Assistant 209-556-1630 ext 2365, Linda Epps 209-556-1630 ext 2368, Cheryl Patton, Kitchen 209-556-1630 ext 1582

Critical Issues:

WHAT DETAILS CAN YOU PROVIDE?

Power: Permanent

Heat: Yes

Air Conditioning: Yes

Water: Yes

Lavatories: Yes

Medical: None



Shelter Report

Help

Print

Close

*Red Label: indicates a required field.

- Basic Info
- Notification
- Geo-Location
- Attachments & Overlays
- Distribution & Sharing

GEO LOCATION & MAPPING

Site Name	Site Type	
Don Pedro Elementary School	Elementary School	
Street Address	Apt or Lot No.:	
2300 Don Pedro Road		
City	State	Zip
Ceres	CA	95307
Intersection - Street 1	Intersection - Street 2	
Don Pedro Road	Central Avenue	
County	Geographic Area (Region, District, Campus, etc).	
Stanislaus	Ceres	

Country

Additional Location Information

Show on Map?	Geo Located By	Latitude	Longitude
Yes	byMap	37.582510519676	-120.95538242924

[Display on Map](#)



Shelter Report

Help

Print

Close

*Red Label: indicates a required field.

- Basic Info
- Notification
- Geo-Location
- Attachments & Overlays**
- Distribution & Sharing

ATTACHMENTS

* denotes an attachment uploaded from the common library

Document Name

Optional
Description

[Don Pedro Elementary School \(Ceres\) - MPR and Kitchen Facility.pdf](#)

[Sign.pdf](#)

[Playground.pdf](#)

[Parking.pdf](#)

[Field.pdf](#)

[Aerial.pdf](#)

[Don Pedro Elementary School \(Ceres\) - MPR and Kitchen Facility floor plans.pdf](#)

Web Pages

Available Overlay(s):

Create Overlay

Shelter Report

*Red Label: indicates a required field.

Basic Info Notification Geo-Location Attachments

ATTACHMENTS

* denotes an attachment uploaded from the common

Document Name

[Don Pedro Elementary School \(Ceres\) - MPR and Kitchen](#)

[Sign.pdf](#)

[Playground.pdf](#)

[Parking.pdf](#)

[Field.pdf](#)

[Aerial.pdf](#)

[Don Pedro Elementary School \(Ceres\) - MPR and Kitchen](#)

Web Pages

Available Overlay(s):

Create Overlay

Create PDF Combine Files Export Forms

1 / 14 61.3%

Find

Stanislaus County Facility Resource Survey

SITE & LOCATION NAME

Date Updated 12/20/2010

Site Name (i.e. Modesto High School): Don Pedro Elementary School

Location Name (i.e. Gymnasium): Multi-Purpose Room and Kitchen Facility

SITE INSPECTED AND ACCEPTABLE FOR

Square footage of location: 2,700

Potential Site Usage:

- Multi-use without pets
- Multi-use with pets
- General Population/Point of Distribution (POD)
- Respite/Point of Distribution (POD)

Shelter Capacity- Overnight use expected:
(Number assumes total Sq.Ft. divided by 40 Sq.Ft. per person with 10% of the population being persons with functional need, requiring 60 Sq.Ft.)

63

General Assembly Capacity- No overnight use:
(Total Sq.Ft. divided by 20 Sq.Ft. per person)

135

Based on the capacity for Shelter use, this location will fall into one of the following capacity classifications:

- Shelter Use Class 1= 1 to 100
- Shelter Use Class 2= 101 to 250
- Shelter Use Class 3= 251 to 1000

Based on the capacity for General Assembly use, this location will fall into one of the following capacity classifications:

- General Use Class 1= 1 to 100
- General Use Class 2= 101 to 250
- General Use Class 3= 251 to 1000

Shelter Report

*Red Label: indicates a required field.

- Basic Info
- Notification
- Geo-Location
- Attachments

ATTACHMENTS

* denotes an attachment uploaded from the common

Document Name

[Don Pedro Elementary School \(Ceres\) - MPR and Kitchen](#)

[Sign.pdf](#)

[Playground.pdf](#)

[Parking.pdf](#)

[Field.pdf](#)

[Aerial.pdf](#)

[Don Pedro Elementary School \(Ceres\) - MPR and Kitchen](#)

Web Pages

Available Overlay(s):

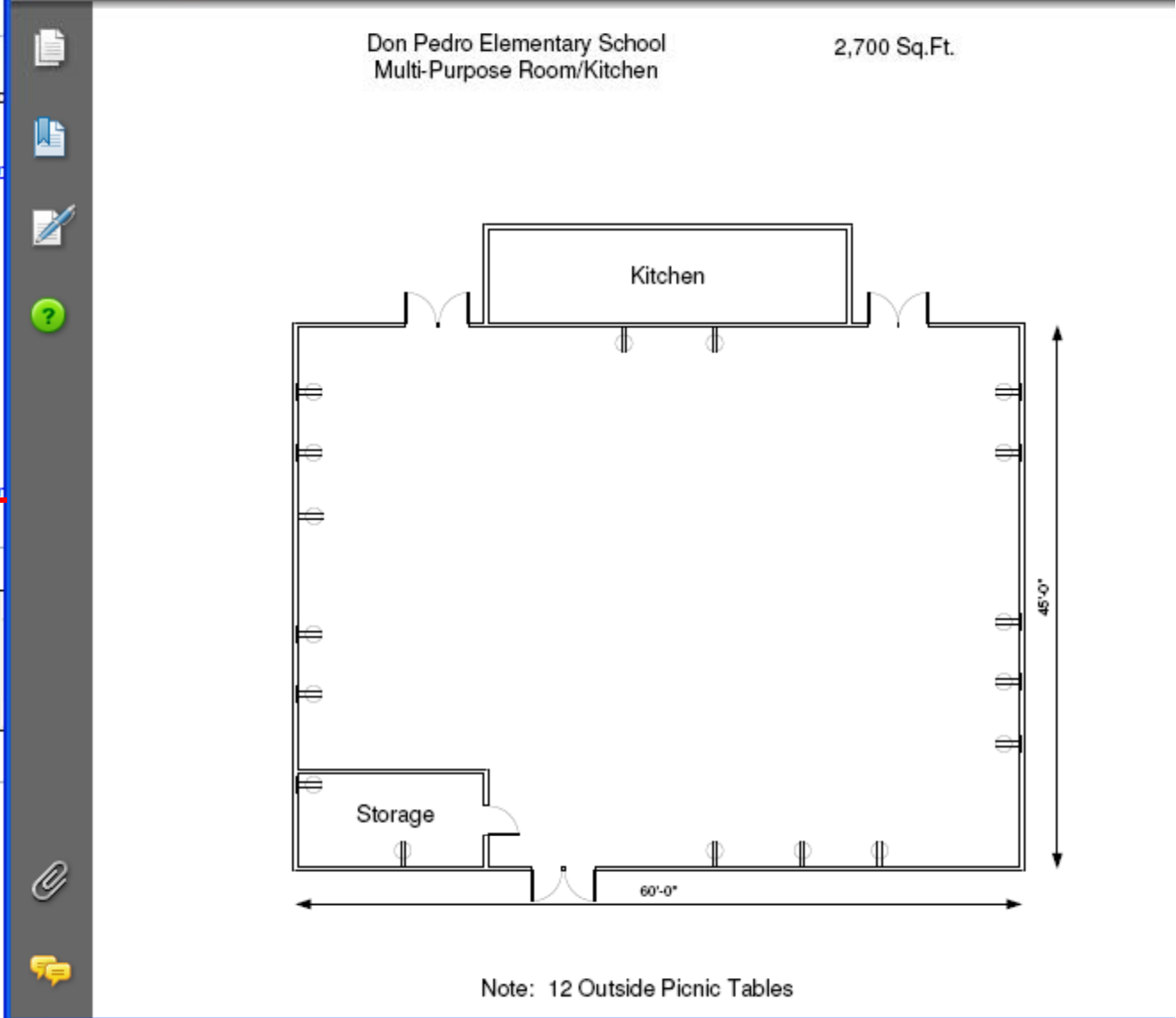
Create Overlay

File Edit View Document Comments Forms Tools Advanced Window Help

Create PDF Combine Files Export Sign Forms Review & Con

1 / 1 68%

Find



FACILITY USE COLLABORATIVE

Considerations

- No funding, no budget, all in-kind support (except for approximately \$250 toward measurement tools from MMRS budget)
- Discovered functional need resources through Registrar (Elections) via DRAIL
- Finalized Assessment Tool within four months

FACILITY USE COLLABORATIVE

Considerations

- Trained 30+ staff to perform assessments
- Completed 90+ school site assessments within three months
- Stanislaus County Board of Supervisors approved American Red Cross/County MOU in 2010
- On-going assessments of non-governmental facilities

CONTACT INFORMATION

Renee Cartier

Emergency Manager

Stanislaus County Department of Public Health

209-558-7035

rcartier@schsa.org

www.schsa.org/PublicHealth

Emergency Preparedness

Rebecca Ciszek

Regional Manager Stanislaus

American Red Cross Capitol Region

209-523-6451

CiszekR@usa.redcross.org

www.redcrosscrc.org

Philadelphia UASI: Regional Collaboration in Public Health Preparedness

Kristin Beck

*Medical Reserve Coordinator
Public Health Management Corporation*

Robyn Slater, MPH

*Community Outreach Coordinator
Public Health Management Corporation*

Chad Thomas, MPH

*Communications Outreach Coordinator
Philadelphia Department of Public Health*



Objectives

- Overview of Philadelphia UASI
- Public Health Planning
- Regional Planning-Functional Needs Subcommittee
- Vulnerable Populations Activities
- Medical Reserve Corps
- Overall challenges and successes

Philadelphia UASI

- ◎ 4 states/ 12 counties (5.8 million people)
 - Pennsylvania (3.8 million people)
 - Bucks, Chester, Delaware, Montgomery, and Philadelphia
 - New Jersey
 - Burlington, Camden, Cumberland, Gloucester and Salem
 - Delaware
 - New Castle
 - Maryland
 - Cecil

Regional Public Health Planning

- ⦿ Regional mass medication distribution
 - Strategic National Stockpile
 - Non-SNS outbreaks
- ⦿ Epidemiological Information sharing
- ⦿ Public Information
- ⦿ Development of Guidelines
- ⦿ Coordination with non-public health agencies
 - EMAs, Hospitals, First Responders

Targeted Audience

- ① *Vulnerable Populations*

- Individuals who cannot receive, understand or act upon emergency orders

- ① *Functional Needs*

- Communication
- Medical Care
- Maintaining Independence
- Supervision
- Transportation

Planning for Vulnerable Populations

- ◎ SEPA Regional Task Force
 - Functional Needs Subcommittee
- ◎ Networking with CRI-MSA partners in other states
- ◎ Outreach Activities using the *Trusted Source Model*
 - Communications
 - Training and exercises
 - Providing resources

Outreach Model

Agencies that serve
**People with
Cognitive/
Developmental
Disabilities**

Agencies that Serve
**Low-Income
Populations**

**Neighborhood
Agencies**

Agencies that serve
**People Who are
Deaf or Hard of
Hearing**

**Religious
Institutions
and Faith-Based
Organizations**

**Vulnerable Populations
Emergency Planners**

Agencies that serve
**People Who are
Blind or Visually
Impaired**

Agencies that serve
**Homebound
Elderly People**

**HIV/AIDS
Service Agencies**

Agencies that serve
**People who have
Low English
Proficiency (LEP)**

Agencies that serve
**Physically Disabled
Persons**

Agencies that serve
Homeless People



- Health Bulletin (available in 12 languages)
- Health Information Cards
- *Everybody Ready* workbooks
- ReadyNotifyPA brochures
- Freebies!
 - Ready Pouches
 - Hand Sanitizer
- Tailored Train-the-Trainer Presentations
- Continuity Of Operations Planning (COOP)

Recent Collaborations

- ◉ **Workshops for Community-Based Organizations (CBOs)**
 - April and May 2010: *Emergency Preparedness Conferences for CBOs and Service Providers*
 - January 2010: *Emergency Communications and Staffing Preparedness: A Tabletop Exercise for Non-Governmental CBOs*
- ◉ **Workshops for Faith-Based Organizations (FBOs)**
 - September 2010: *Empowering your Congregation: Emergency and Disaster Planning for Chronic Illnesses*
 - March 2011: *Emergency Preparedness Conference: Planning for the Faith Community*
 - May 2011: *Transitions: Promoting Resilience in Your Congregation*
 - Fall 2011: *Choices: Health and Preparedness for Seniors and Shut-Ins*

Recent Collaborations

- **Vulnerable Populations Communications and Events**
 - *PDPH Health Bulletin and 4-county Emergency Preparedness Bulletin*
 - February 2011: *Test of Emergency Communications to Vulnerable Populations: A Component of SE PA Public Health Emergency Response Challenges Tabletop Exercise*
 - September 2011: **Functional Needs Symposium**

Successes

- ⦿ CFBOs involved in regional planning
 - Functional Needs Subcommittee
- ⦿ Mass Distribution of Medical Countermeasures
 - Success of PUSH Sites
- ⦿ Numbers
 - Trained
 - Participating in Exercises
 - Contact Databases
- ⦿ Special Needs Registry
- ⦿ Ready Notify PA

Challenges

- Grant-based funding
- Continuity of project/staff
- Limited county Health Dept./EMA staff
- Limited availability of agencies (time/staff)
- Making Emergency Preparedness an agency priority

Moving Forward

- Standardized train-the-trainer emergency preparedness presentation
- Continued outreach to organizations by Functional Needs Subcommittee
- Evaluating communications to vulnerable populations through the SEPA Regional Public Health Emergency Response Exercise and CRI-MSA (Cities Readiness Initiative-Metropolitan Statistical Area)

Medical Reserve Corps

What is the Medical Reserve Corps?

- Federal program founded after the events of September 11, 2001 when all Americans were asked to volunteer in support of their country.
- Partner program of Citizen Corps which promotes volunteerism and service throughout the nation.



Medical Reserve Corps

- Units are community-based and may be used for both health promotion activities and to prepare for and respond to emergencies.
- MRC volunteers supplement existing local emergency and public health resources. MRC volunteers are not first responders.
- Volunteers include medical and public health professionals such as physicians, nurses, pharmacists, dentists, and veterinarians. Other community members, such as interpreters, chaplains, and office staff, can fill vital support positions.



Background/Purpose of Building the Regional MRC

- SE PA Regional Task Force focuses on all hazards preparedness and planning in the region. Building the MRC addresses issue of staffing and volunteer coordination.
- Research shows that approximately 2500 volunteers will be needed per county in the event of a public health disaster. There are currently 1600 (appx) in the five county region.

SE PA/UASI MRC Goals

- Develop strong planning and active partnerships
- Align Emergency Management and Public Health groups
- Facilitate meaningful training and exercise opportunities
- Begin conversations across county and state lines
- Familiarize volunteers with response systems and common practice
- Strengthen the regional asset through Mutual Aid Agreement

Strategies for Building Partnerships

- Participation in quarterly UASI meetings
- Participation in Regional and MSA Exercises
- Developing Regional Training opportunities
- Working on Task Force initiatives that include Emergency Management and Public Health entities
- Informing State and Federal entities about challenges and progress

Contact Information

Kristin Beck

Regional Medical Reserve Corps Coordinator

kristinb@phmc.org

(267) 322-1145

Robyn Slater, MPH

Community Outreach Coordinator

Public Health Management Corporation

robyn@phmc.org

rslater@chesco.org

(267) 746-0685

Chad Thomas, MPH

Communications Outreach Coordinator

Philadelphia Department of Public Health

chad.thomas@phila.gov

(215) 685-6459