

## Overview

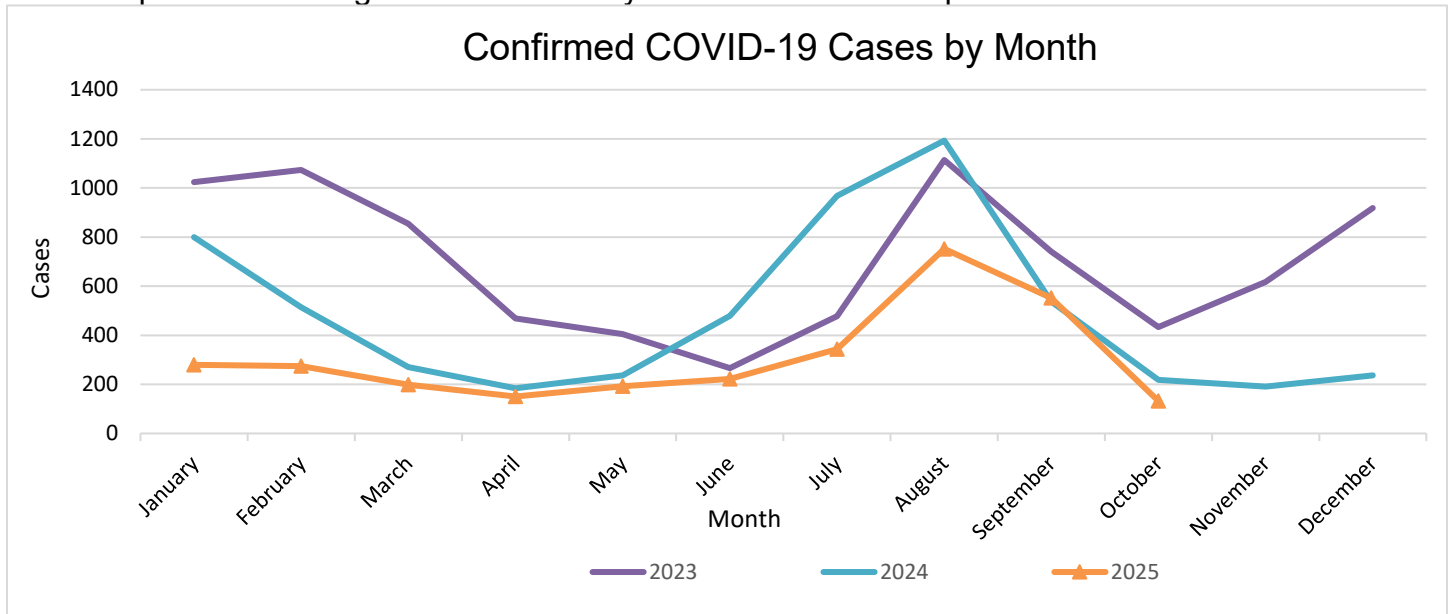
- COVID-19 cases and the percentage of positive tests have been decreasing.
- COVID-19 -related Emergency Department visits have been decreasing.
- Influenza and RSV related Emergency Department visits have been stable.
- In Turlock, Wastewater data shows that COVID-19 has been decreasing while Influenza and RSV have not been detectable.

## COVID-19 MONITORING

	Report Weeks			Fiscal Year: 24/25		
Age	Case Count	%	Case Rate	Case Count	%	Case Rate*
0-17	10	20.4%	0.07	963	20.3%	6.45
18-44	10	20.4%	0.05	1,307	27.6%	6.24
45-64	11	22.4%	0.09	1,074	22.7%	8.32
65+	18	36.7%	0.24	1,389	29.3%	18.68
<b>Total</b>	<b>49</b>	-	-	<b>4,733</b>	-	-

\*Rate per 1,000 population; Data Source: Population Estimates used for case rate calculations are from the California Department of Finance. Fiscal Year is from July 1, 2024, through June 30, 2025.

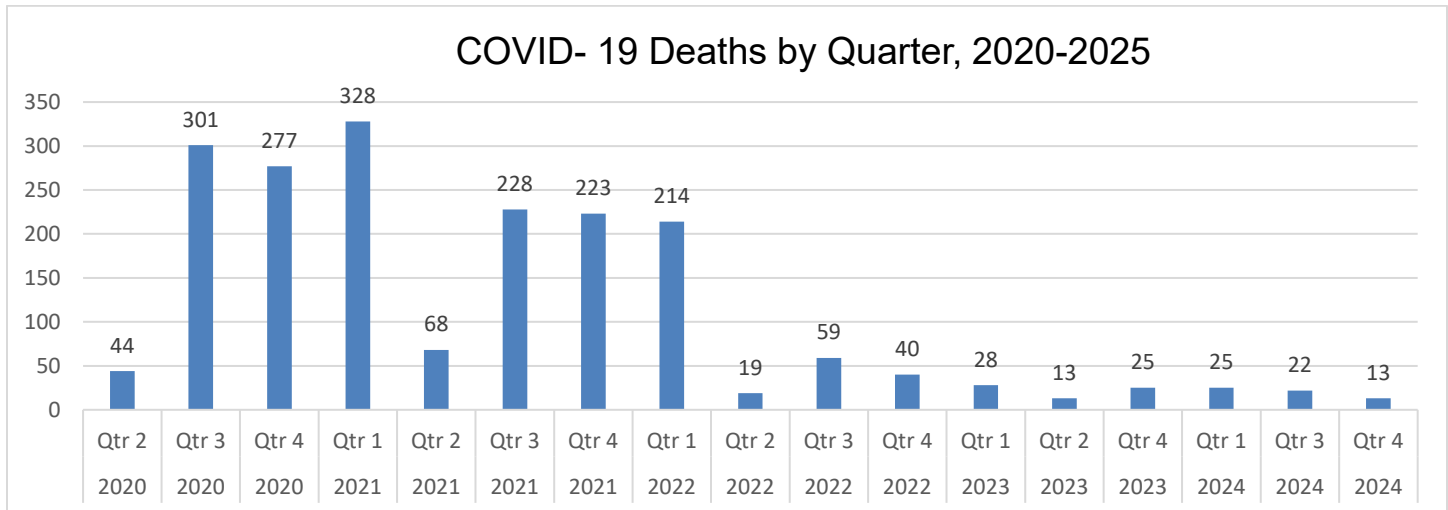
This graph displays the number of confirmed COVID-19 cases by month & year, reported to the public health department among Stanislaus County residents based on episode date.



Note: Due to delays in specimen processing, data may be incomplete.

Reported COVID-19 cases and deaths on this page are those that have been confirmed by Stanislaus County Public Health.

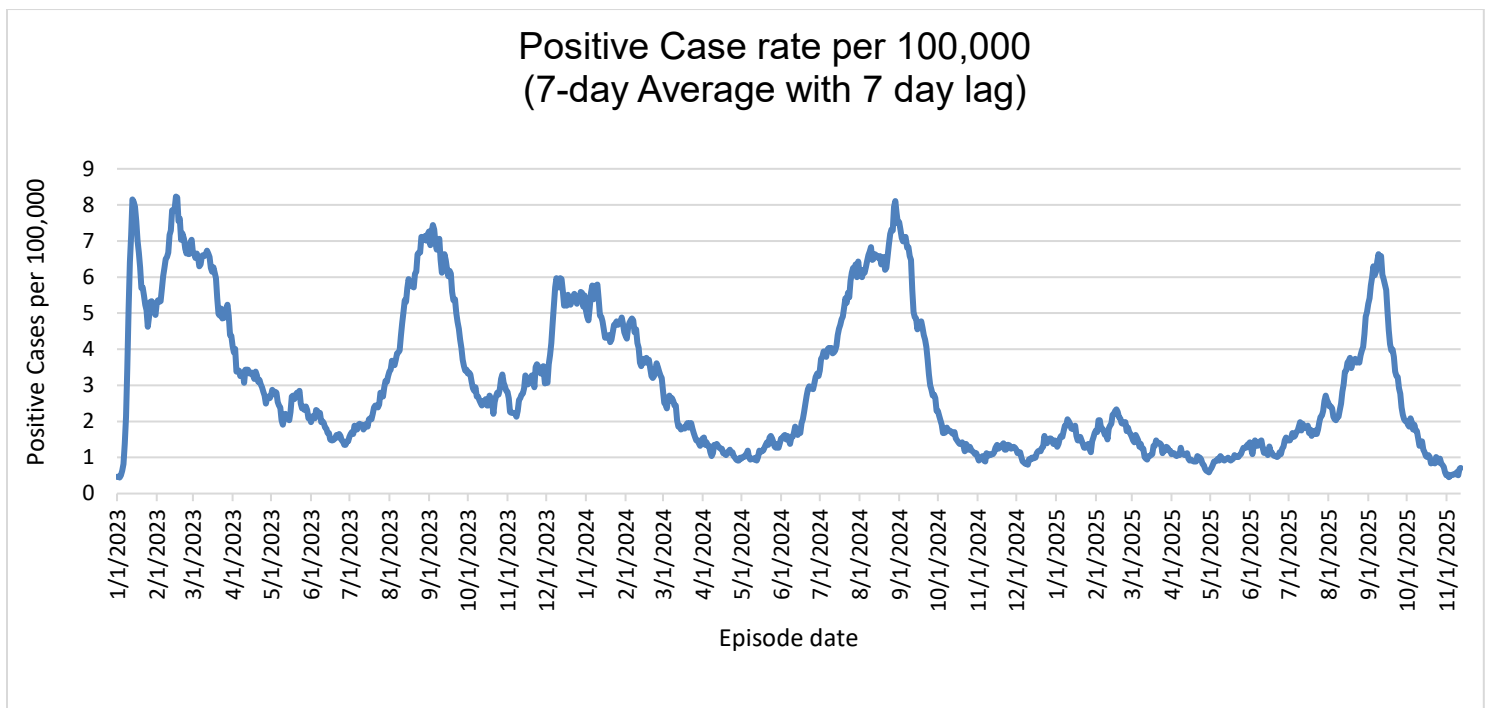
The graph below shows COVID-19 deaths among Stanislaus County residents by quarter and year.



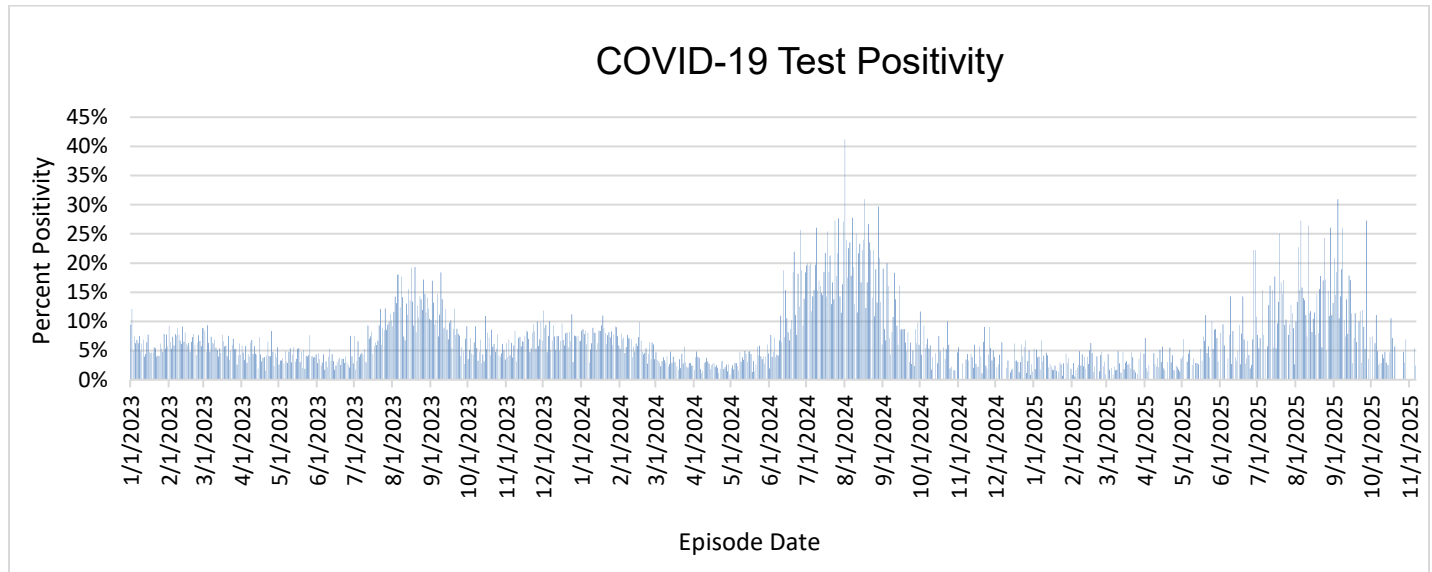
Note: Due to delays in death reporting and assessment, data may be incomplete. Quarters with deaths below 10 will not be shown.

Reported COVID-19 cases and deaths on this page are those that have been confirmed by Stanislaus County Public Health.

The graph below shows the positive case rate (number of positive cases per 100,000 county population), a 7-day average with a 7-day lag through the report week. It does not include the state adjustments and may vary from state measures.



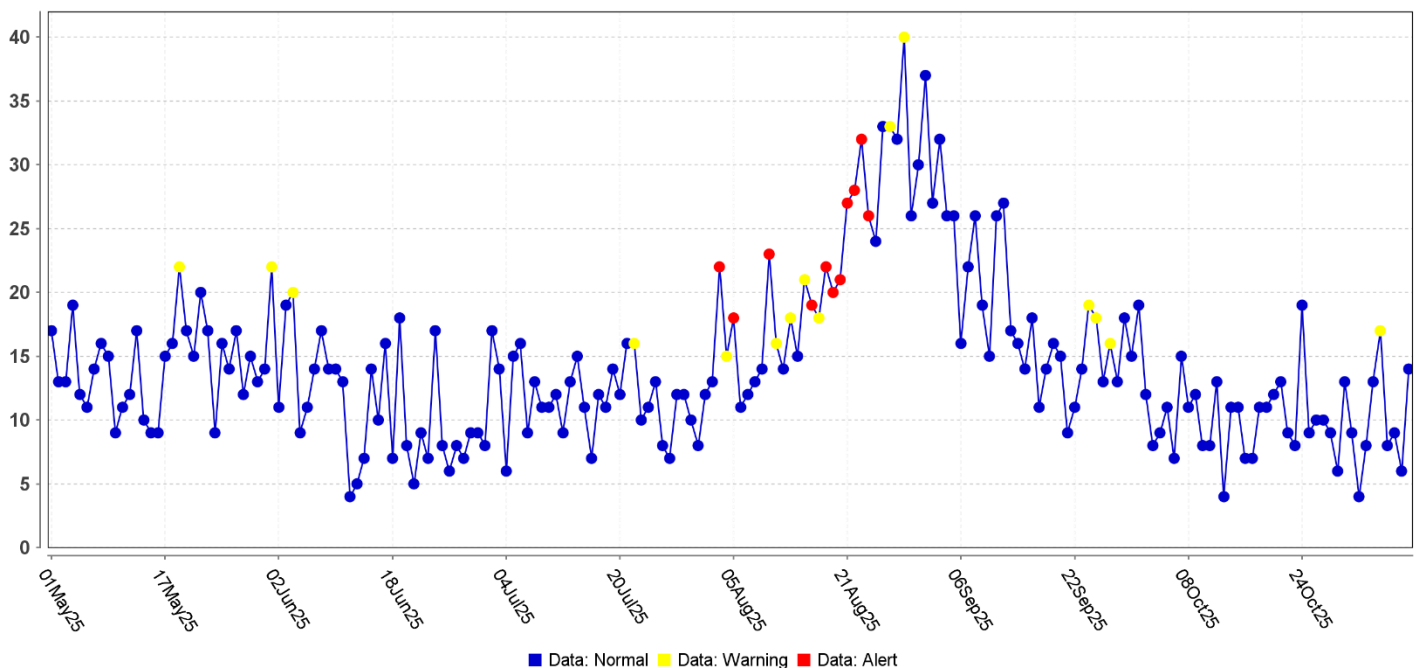
The graph below shows testing positivity (percent of positive tests), a 7-day average with a 7-day lag, through the report weeks. It may vary from state measures.



## COMMUNITY MONITORING – EMERGENCY CASES

### COVID-19 MONITORING

The graph below shows the daily case counts of emergency room visits for COVID-19-like illnesses for all Stanislaus County Hospitals.





## SEVERE INFLUENZA

The chart below shows the number of people who are in the intensive care unit and deaths for children under 18 from influenza.

	Report Weeks	This Influenza Year
<b>Intensive Care Unit</b>	0	0
<b>Death under 18 years old</b>	0	0

The influenza year begins MMWR week 40, this year beginning on September 28, 2025.

## Laboratory detections of respiratory viruses other than COVID-19

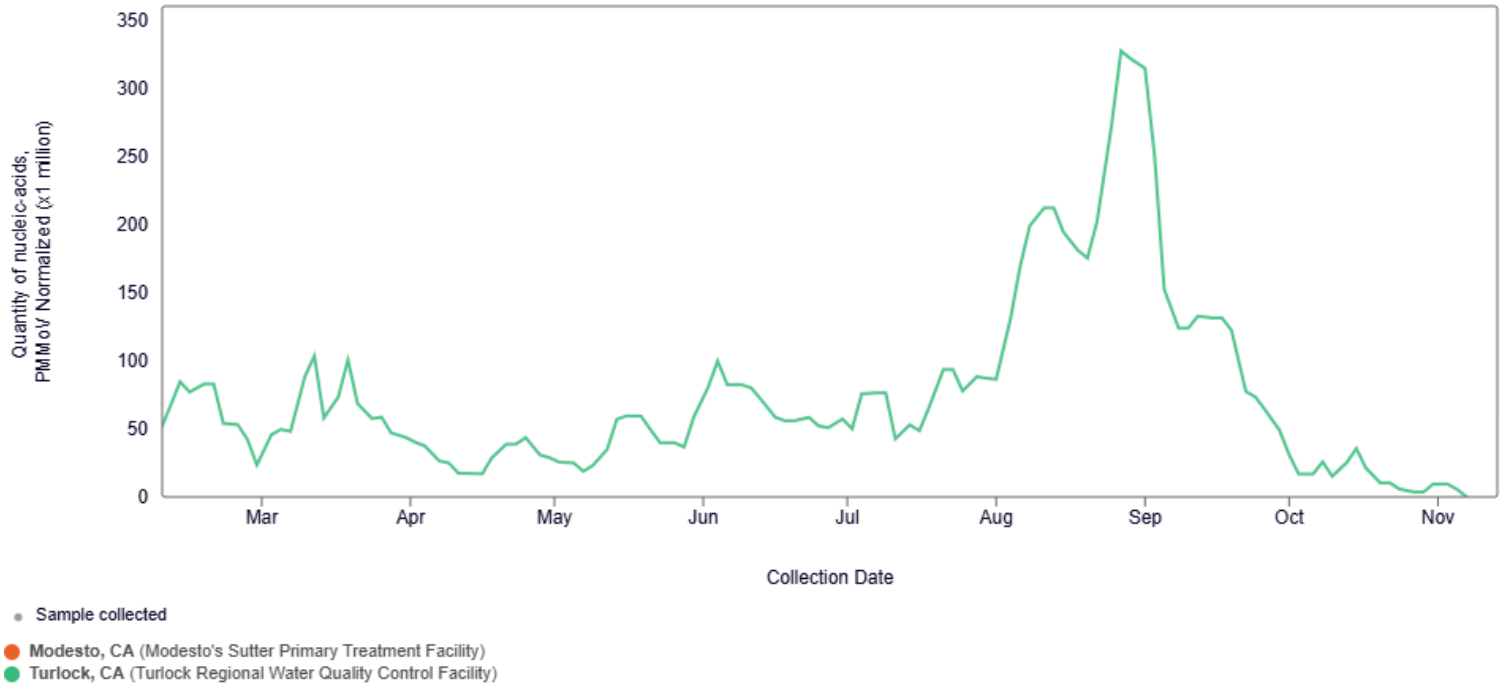
The chart below looks at how many samples were tested for different kinds of influenza-like illness by the regional San Joaquin Public Health Laboratory (including Stanislaus County specimens), during the report weeks, and how many were positive, in order to monitor what is currently spreading in the area.

	Report Weeks		This Influenza Year	
	Samples Tested	Positive Tests	Samples Tested	Positive Tests
<b>Influenza A</b>	0	0	1	0
<b>Influenza B</b>	0	0	1	0
<b>RSV</b>	11	0	29	0
<b>Parainfluenza</b>	11	0	29	1
<b>Adenovirus</b>	11	2	29	6
<b>Rhinovirus/Enterovirus</b>	11	2	29	4
<b>Human Metapneumovirus</b>	11	0	29	0

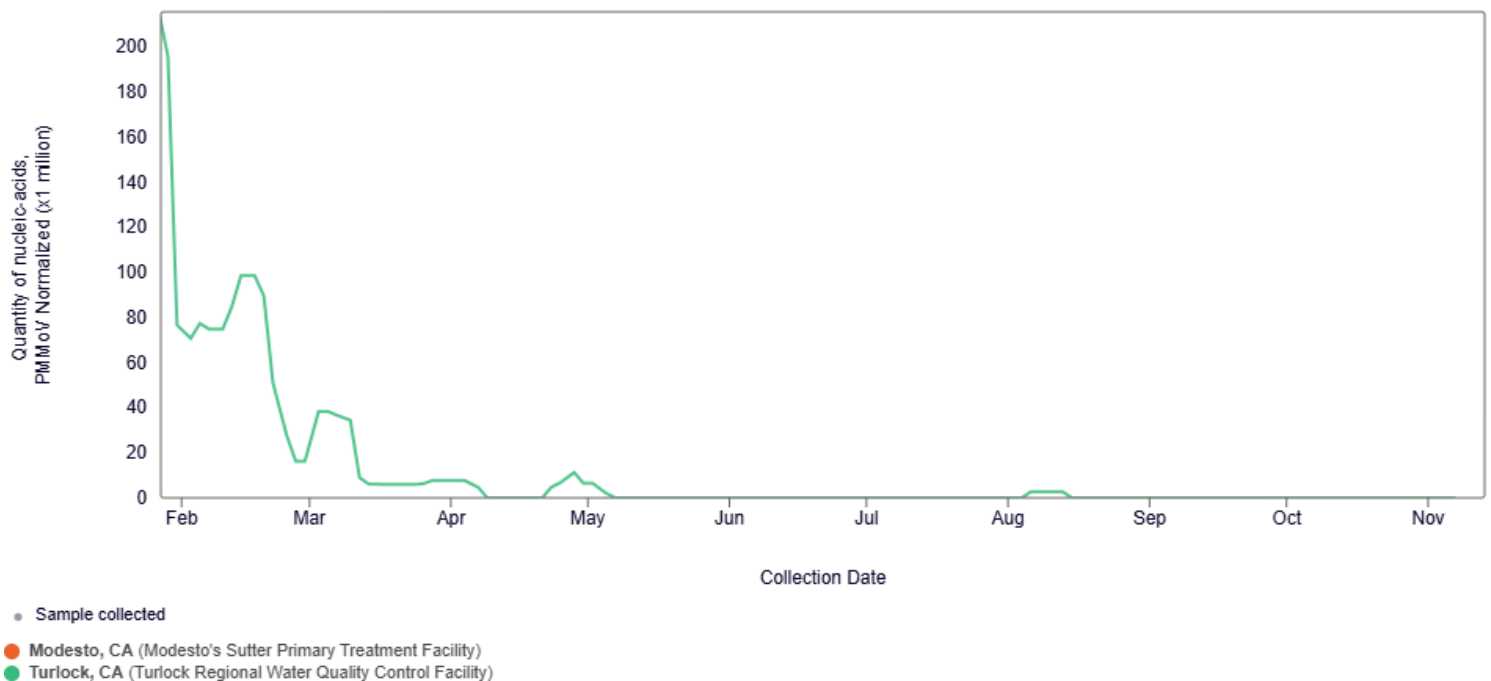
Table reference reflects the San Joaquin Public health lab testing numbers.

## COMMUNITY MONITORING – WASTEWATER SURVEILLANCE

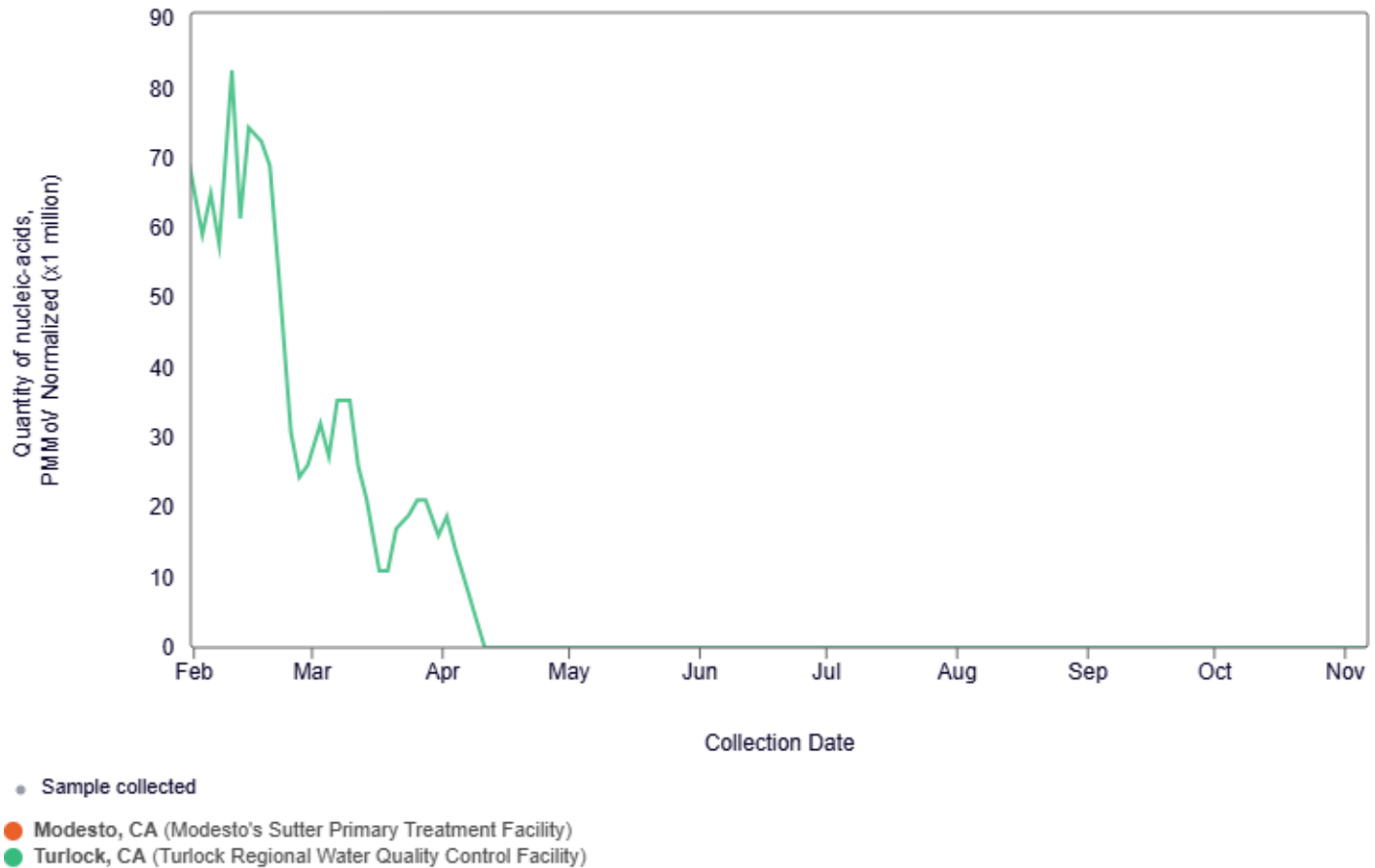
### COVID-19



### Influenza



## RSV



Source:

<https://data.wastewaterscan.org/tracker?charts=CjwQACABSABSBmZIZDk3ZlIGYWQ4NmE5WgNSU1ZyCjIwMjMtMDYtMDFyCjIwMjMtMTEtMDmKAQY0NmYyOTI%3D&selectedChartId=46f292>