

# STANISLAUS COUNTY DATA SNAPSHOT



October 2017

## Stanislaus County

- 541,560 Population<sup>1</sup>
- 34.1 Median Age<sup>1</sup>
- 78.25 Years Life Expectancy<sup>2</sup>
- \$50,125 Median Household Income<sup>3</sup>
- 40.9% Speak a language other than English at home<sup>3</sup>
- 1,515 square miles<sup>4</sup>
- 9 Cities
- 25 County Parks
- 5 Hospitals
- 13.2 inches Average Annual Rainfall<sup>5</sup>



<sup>1</sup>Census 2016 Population Estimate

<sup>2</sup>2014, US County-Level Trends in Mortality Rates for Major Causes of Death, 1980-2014 Dwyer-Lindgren L, Bertozzi-Villa A, Stubbs RW et al. JAMA. 2016;316(22):2385-2401

<sup>3</sup>Census 2011-2015 American Community Survey 5-year average

<sup>4</sup>2010 Census Gazetteer File

<sup>5</sup>USClimateData.com



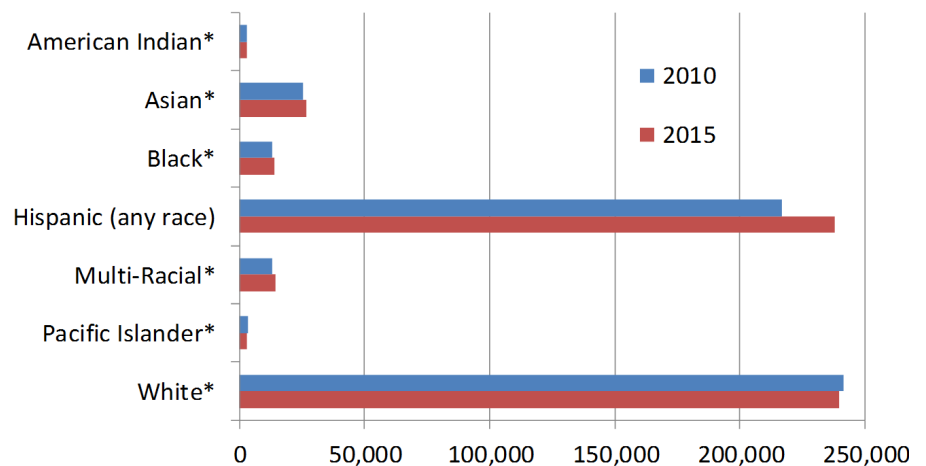
Located in the heart of California's rich central valley Stanislaus County's stated goal is to be the best county in America. For over 150 years, Stanislaus County has been synonymous with rich agriculture and strong communities. Top commodities include Almonds, Milk, Chickens, and Cattle.

Stanislaus County is governed by a CEO, and a board of supervisors, elected from each of five Supervisorial Districts.

With the vision of "Water, Wealth, Contentment, Health" the city of Modesto is the county seat with 39% of the population.

The county is intersected by two major freeways and truck routes, I-5 and CA-99, as they travel the length of the valley transporting goods across the state and the country.

## Stanislaus County Race and Ethnicity Estimates



Source: California Department of Finance

\* Non-Hispanic

# STANISLAUS COUNTY DATA SNAPSHOT



October 2017

## Work, Housing and Crime

- 1 in 4 employees work in Agriculture or Manufacturing<sup>1</sup>
- 8.0% Unemployment July 2017<sup>2</sup>
- 56.7% Owner-occupied housing<sup>3</sup>
- \$274,300 Median Home Value<sup>3</sup>
- 533 per 100,000 Violent Crime Rate<sup>4</sup>
- 4,344 per 100,000 Property Crime Rate<sup>4</sup> (second worst in the state)
- 77.2% of adults have High school diploma or GED<sup>5</sup>
- 16.5% of adults have Bachelor's degree or higher<sup>5</sup>

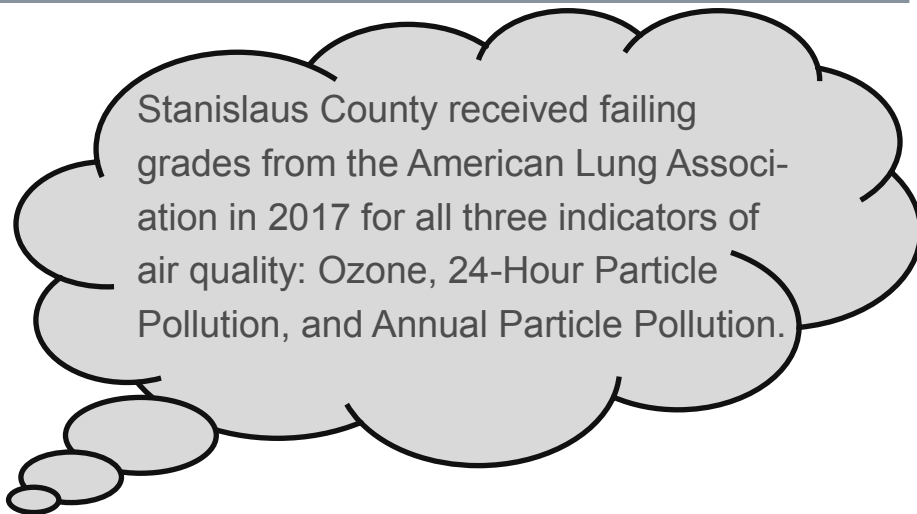
<sup>1</sup>Stanislaus County Comprehensive Economic Development Strategy 2017-2022

<sup>2</sup>CA Employment Development Department

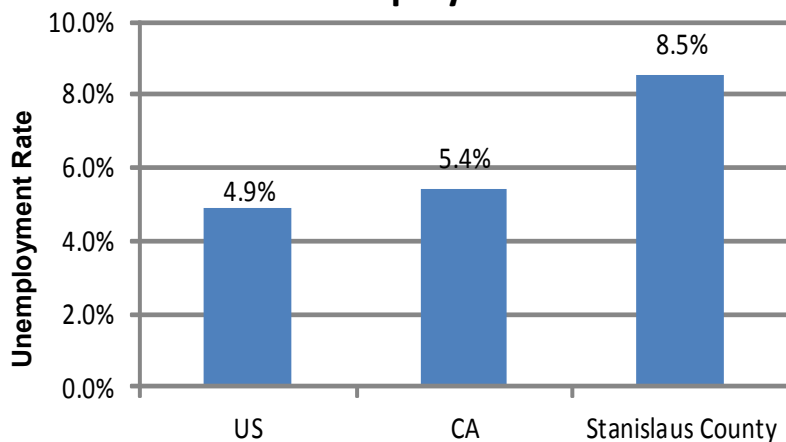
<sup>3</sup>Census 2016 American Community Survey

<sup>4</sup>CA Department of Justice 2005-2014

<sup>5</sup>American Community Survey 2011-2015, adults 25 and older



### 2016 Unemployment Rates



Source: CA Employment Development Department

17 Estimated Drug-Induced Deaths per 100,000 Population per Year



Source: CDPH County Health Status Profile 2017

# STANISLAUS COUNTY DATA SNAPSHOT



October 2017

## Children and Education

- 147,117 Children under 18<sup>1</sup>
- 41.8% of households have children<sup>2</sup>
- 107,612 Students enrolled in K-12 2015-2016<sup>3</sup>
- 25 School Districts
- 23.9% of children are living in poverty<sup>4</sup>
- 35% of children are living in households with single parents<sup>5</sup>
- 9.9% High School Drop-Out Rate<sup>6</sup>
- 6.3 infant mortality rate per 1,000 live births<sup>4</sup>
- 27.7 Age-Specific Birth rate to mothers 15-19 years old<sup>4</sup>

<sup>1</sup>Census 2016 Population Estimate

<sup>2</sup>Census American Community Survey 2011-2015 5 year estimates

<sup>3</sup>California Department of Finance

<sup>4</sup>2017 CDPH County Health status profile

<sup>5</sup>2017 County Health Rankings and Road Maps

<sup>6</sup>California Department of Education CAL-PADS 2015-2016



39% of 3rd graders tested proficient or better at reading

Source: CA Department of Education STAR Test Results 2013

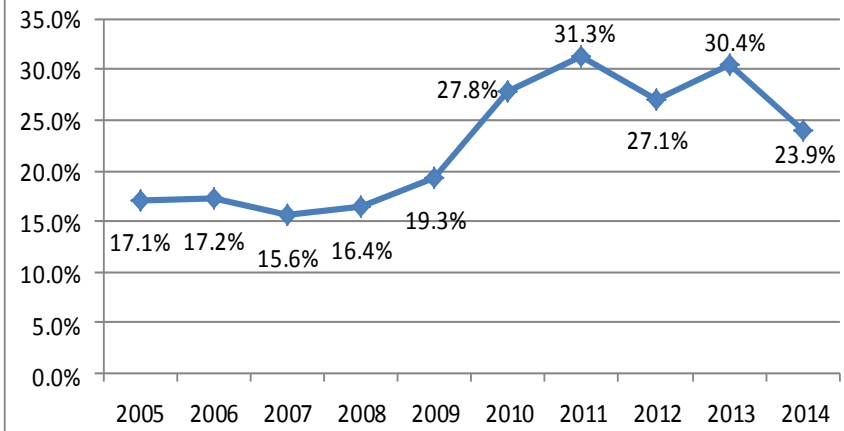
## High School Graduation Rate 83.8%

(California rate 83.2%) 2015-2016

Source: CA Department of Education CALPADS



## Percent of Children In Poverty



Source: CDPH County Health Status Profiles 2008-2017

Developed by Public Health Division,  
Community Assessment Planning and Evaluation Unit

# STANISLAUS COUNTY DATA SNAPSHOT



October 2017

## Health

- 793.3 per 100,000 Age-adjusted Death Rate<sup>1</sup>
- 19.6% of residents under 65 have no health insurance<sup>2</sup>
- 22% of kids age 1-18 have never been to the dentist<sup>3</sup>
- 19.3% of the population has asthma<sup>4</sup>
- 12.3% of adults have diabetes<sup>5</sup>
- 412.6 cancer diagnoses per 100,000 population<sup>6</sup>
- 427 people hospitalized or dead from car accidents in 2013<sup>7</sup>
- 221 Syphilis diagnoses in 2016<sup>8</sup>
- 135.1 Death rate from Coronary Heart Disease (Worst in California)<sup>1</sup>

<sup>1</sup>CDPH County Health Status Profile 2017

<sup>2</sup>CA Office of Statewide Planning and Development

<sup>3</sup>2014 California Health Interview Survey

<sup>4</sup>2015 California Health Interview Survey

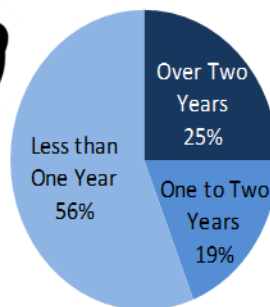
<sup>5</sup>2014-2015 California Health Interview Survey

<sup>6</sup>State Cancer Profiles 2010-2014

<sup>7</sup>EpiCenter California Department of Public Health

<sup>8</sup>CalREDIE Confirmed and Probable, episode date

## The Last Time Adults Went to the Dentist



Source: 2014 CA Health Interview Survey



11.1% of Adults Smoke Tobacco.

Source: 2017 CA Health Interview Study

23.1% of 11th graders have smoked Tobacco.



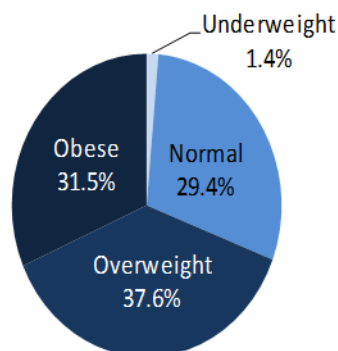
Source: 2011-2013 CA Healthy Kids Survey

## Top 5 Causes of Death

1. Diseases of the Heart
2. Cancer (Malignant Neoplasms)
3. Chronic Lower Respiratory Diseases
4. Stroke (Cerebrovascular Diseases)
5. Unintentional Injury

Source: CDPH Death Statistical Master Files 2010-2012

## Adult Body Mass Index



Source: 2015 CA Health Interview Survey



93% of Residents have Access to Exercise Opportunities



20% of Adults are Physically Inactive

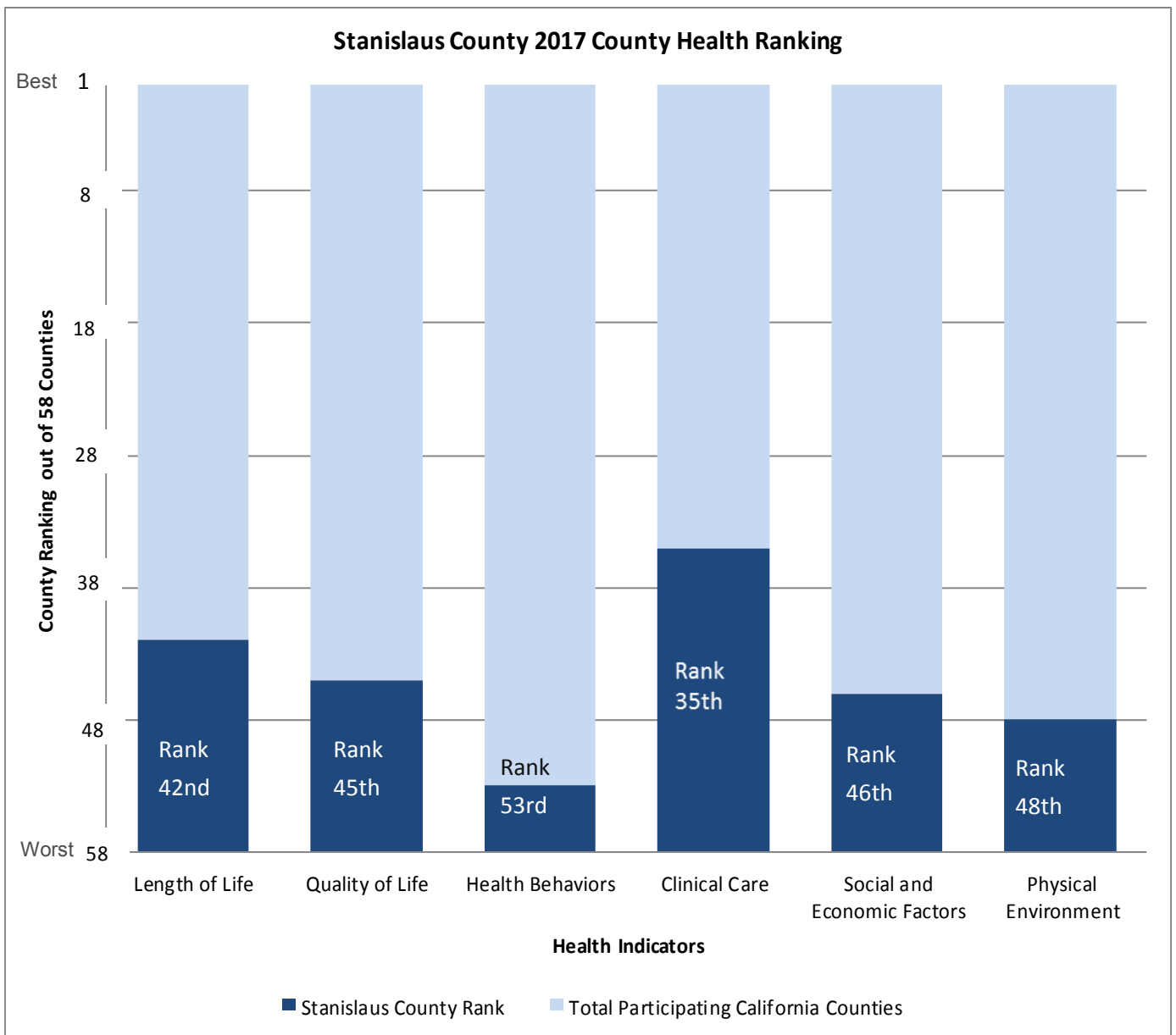
Source: 2017 County Health Rankings

# STANISLAUS COUNTY DATA SNAPSHOT



October 2017

## How Does Stanislaus Compare to Other California Counties?



Source: 2017 County Health Rankings, Robert Wood Johnson Foundation

Developed by Public Health Division,  
Community Assessment Planning and Evaluation Unit